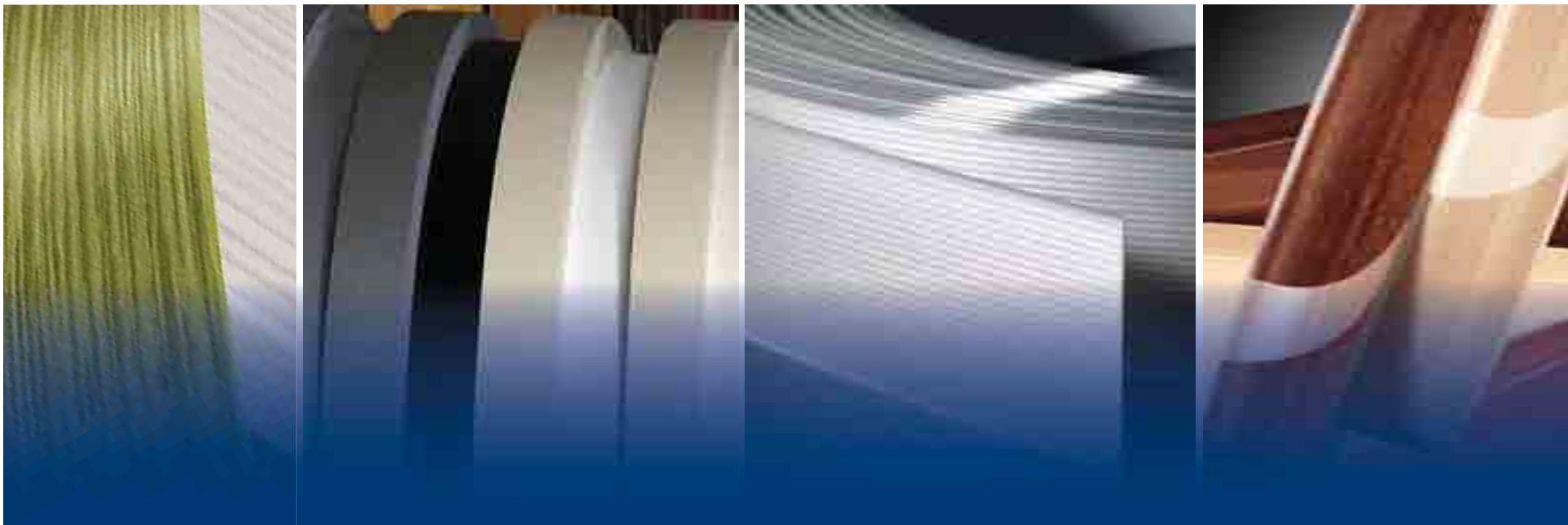


SURTECO



**Cross Reference Chart**  
for Instant Edge Program

# Contents



Rigid ABS 'SF' Solid Colours 3-13



Rigid ABS 'DC' Patterns and Woodgrains 14-38  
Rigid ABS 'DM' Through-grains



0.4mm Thin Thermoplastic 39-39



Melamine Solid Colours 40-43



Melamine Patterns and Woodgrains 44-47



3D Acrylics and Space 48-50



'Flexiwood' Thick Veneer 51



'Flexiwood' Thin Veneer 52



General Information 54



Terms and Conditions 55

## Döllken ABS Edgebanding Reference Chart - Solid Colours 'SF' Type

Colour Code	Availability									SURTECO Colour Name	Laminex	Formica	CHH ColourPyne	Polytec	D & R Hendersons	Borgs (Parbury)	Melteca
	19x1 mm	21x0.8 mm	21x1 mm	22x2 mm	29x1 mm	29x2 mm	38x1 mm	38x2 mm	55x2 mm								
SF082Z			O							Accent White Naturale			Accent White Naturale				
SF983B			D	D		D				Acorn	Acorn						
SF184Z				D						Airlie Blue	Airlie Blue						
SF267Z			D							Alabaster (BG)				Alabaster			
SF888B			O	O						Alabaster (BG)				Alabaster			
SF024Z			S	C		S		O		Alabaster (L)	Alabaster						
SF037Z			D	D						Almond		Almond				Natural Almond	New Pacific Almond
SF679A			O							Almond Sand Naturale			Almond Sand Naturale				
SF273Z			O	O						Alpaca	Alpaca						
SF972B			O	S						Alpine Haze	Alpine Haze	Frost Dust (*Deleted)					
SF336Z			O	O						Amaro Matt				Amaro Matt			
SF207Z			D	D						Angora		Angora					
SF021Z			O	C		C		C		Anthracite (F)		Deep Anthracite					
SF200Z						D				Anthracite (CHH)			Anthracite				
SF005Z				C		C		D		Antique White 07				New Antique White	True Antique White		
SF005Z10			C	C						Antique White 07 (Stp)				New Antique White(Stp)	True Antique White		
SF005Z08				O						Antique White Ash				New Antique White Ash			
SF829E			O	O						Antler		Antler		Taupe Matt			
SF364Z			O	O		O	O	O		Aries Flint	Aries Flint						
SF028Z				S		S		S		Ash White	Ash White						
SF028Z10			S	D						Ash White (Stp)	Ash White						
SF947B			O	S		S		O		Asphalt		Asphalt					

## Döllken ABS Edgebanding Reference Chart - Solid Colours 'SF' Type

Colour Code	Availability									SURTECO Colour Name	Laminex	Formica	CHH ColourPyne	Polytec	D & R Hendersons	Borgs (Parbury)	Melteca
	19x1 mm	21x0.8 mm	21x1 mm	22x2 mm	29x1 mm	29x2 mm	38x1 mm	38x2 mm	55x2 mm								
SF330Z			O	O		O		O		Baikal		Baikal					
SF214Z			O	O		O		O		Bark		Bark					
SF306Z			O	O		O		O		Battalion Flint	Battalion Flint						
SF272Z			O	O		O		O		Baye	Baye						
SF045Z			O	O						Bayleaf	Bayleaf						
SF215Z			O	O						Birch		Birch					
SF333Z			O							Biscuit			Biscuit				
SF0110			C	C		C		C		Black	Black	Black	Black	Black	Black Satin	Black	New Black
SF011010			C	C	O	C	O	C		Black (Stp)	Black	Black	Black	Black	Black	Black	New Black
SF111Z				S						Black Tulip	Black Tulip	Plum Wine (*Deleted)					
SF111Z10			O	O		O				Black Tulip (Stp)	Black Tulip	Plum Wine (*Deleted)					
SF266D			D	D						Blue Heaven	Blue Heaven						
SF981B			D	D						Blue Moon		Blue Moon					
SF109Z			O	O						Blue Oxide	Blue Oxide						
SF023Z			O	O						Bluegrass	Bluegrass	Blue Spruce (*Deleted)					
SF095Z			D	D						Brittany Blue		Hunter Blue		Provence Blue	Brittany Blue		
SF6476			O	O				D		Bronx Beige		Bronx Beige	Bronx Beige				
SF316B				D						Brown							
SF117Z			O	O						Bud		Bud					
SF097Z				D						Buttercup	Buttercup		Buttercup				
SF038Z			D	S		D				Cactus	Cactus						
SF216Z			D	D						Café		Café					

## Döllken ABS Edgebanding Reference Chart - Solid Colours 'SF' Type

Colour Code	Availability									SURTECO Colour Name	Laminex	Formica	CHH ColourPyne	Polytec	D & R Hendersons	Borgs (Parbury)	Melteca
	19x1 mm	21x0.8 mm	21x1 mm	22x2 mm	29x1 mm	29x2 mm	38x1 mm	38x2 mm	55x2 mm								
SF915C10			O	S		D				Café Crème				Café Crème		Wallaby / Macadamia	
SF467B			O	S						Calico	Calico						
SF984B			O	D		D		D		Calm Grey		Calm Grey			Gumnut Grey	Platinum	
SF096Z			O	O						Calypso Blue	Calypso Blue	Angelsea Blue					
SF221A				D						Camembert				Camembert			
SF987B			O	O						Cappuccino (F)		Cappuccino					
SF266Z			D							Cappuccino (BG)				Cappuccino			
SF291Z			O	D						Cappuccino (BG)				Cappuccino			
SF265Z			O	D						Caraway				Caraway			
SF227Z			O	O						Chamois	Chamois						
SF475B			O	S		O		O		Char Blue		Char Blue	Pacific				
SF044Z				C		C		C		Charcoal	Charcoal					Raven	
SF044Z10			S	C		C		O		Charcoal (Stp)	Charcoal					Raven	
SF062Z			O	S						China Blue	China Blue						
SF358Z			O	O						Cinder Matt				Cinder Matt			
SF048Z			D	D						Citron	Citron						
SF1870			O	O						Clamshell	Clamshell	Dreamtime (*Deleted)					
SF054Z				C						Clarity (Solid)	Clarity						
SF014Z				C		O		O		Classic Beige	Classic Beige	Champagne	Chintz			Light Beige / Eggshell	New Seashell
SF014Z10			S							Classic Beige (Stp)	Classic Beige	Champagne	Chintz			Light Beige / Eggshell	New Seashell
SF528B			O	O						Classic White		Talc White		Classic White (deleted)			
SF088Z			D							Coral (L)	Coral						

## Döllken ABS Edgebanding Reference Chart - Solid Colours 'SF' Type

Colour Code	Availability									SURTECO Colour Name	Laminex	Formica	CHH ColourPyne	Polytec	D & R Hendersons	Borgs (Parbury)	Melteca	
	19x1 mm	21x0.8 mm	21x1 mm	22x2 mm	29x1 mm	29x2 mm	38x1 mm	38x2 mm	55x2 mm									
SF482B										Cornflower Blue		Cornflower Blue						
SF466B				D						Cranberry				Cranberry				
SF328Z			O	O						Crystal White		Crystal White						
SF031Z			O	O		O		O		Dawn Grey	Dove Grey (*Deleted)	Dawn Grey			Dover Grey			
SF059Z			S	S		S				Deep Sea	Deep Sea							
SF217Z			O	O		O				Doe Skin		Doe Skin						
SF976B				D						Dresden		Dresden						
SF069Z				D						Dusk		Dusk						
SF146Z			D	D						Dynasty	Dynasty							
SF085Z			O	S		O		D		Eggplant	Eggplant	Aubergine (*Deleted)						
SF282C			O	O		D		D		Eggshell	Eggshell							
SF094Z			O	S						Empire	Empire							
SF158Z			O	O						Energise		Energise						
SF284C			O	C		C		C		Espresso	Espresso							
SF034Z			C	S				O		Flax	Flax					White Sand	New Vanilla	
SF218Z			O	C		D		D		Flaxon		Flaxon						
SF004Z				C		C		C		Folkstone			Folkstone		Florentine Grey	Fashion Grey / Oyster Grey	New Dove Grey	
SF004Z10			C	C		C				Folkstone (Stp)			Folkstone		Florentine Grey	Fashion Grey / Oyster Grey	New Dove Grey	
SF016Z				C		C		C		Fossil	Fossil		Jungle Moss		Fossick			
SF016Z10			S	C						Fossil (Stp)	Fossil				Fossick			
SF763D			O	O		O		O		Fox Flint	Fox Flint							
SF009Z				D		D				Frame Grey								

## Döllken ABS Edgebanding Reference Chart - Solid Colours 'SF' Type

Colour Code	Availability									SURTECO Colour Name	Laminex	Formica	CHH ColourPyne	Polytec	D & R Hendersons	Borgs (Parbury)	Melteca
	19x1 mm	21x0.8 mm	21x1 mm	22x2 mm	29x1 mm	29x2 mm	38x1 mm	38x2 mm	55x2 mm								
SF165Z			O	O						Fresh Spring	Fresh Spring						
SF052C			O	O						Fresh Sprout	Fresh Sprout						
SF329Z			O	O		O		O		Ghostgum Flint	Ghostgum Flint	Malibu					
SF568C			O	O		O		O		Graphite (L)		Graphite					
SF0502			O	D						Graphite (BG)				Graphite			
SF022Z			O	C		S		S		Gunmetal	Gunmetal						
SF271Z				D						Hemp				Hemp			
SF121Z			O	S						Iceberg	Iceberg	Cool White (*Deleted)					
SF132Z			O	S						Icelandic Blue		Icelandic Blue					
SF5795				S						Indian Sage	Aloe Vera (deleted)	Indian Sage	Sage	Indian Sage	Saga Green		New Moss
SF219Z			O	O						Indian Smoke		Indian Smoke					
SF305Z			O	O						Infinity Flint	Infinity Flint						
SF948B			O	O		O				Ink		Ink					
SF945B			O	C		C		C		Iron Ore		Iron Ore					
SF286Z			O	O		O		O		Juicy Flint	Juicy Flint						
SF156Z			O	S						Jute	Jute						
SF274Z			O	D						Leather				Leather			
SF036Z			O	O						Lichen	Lichen						
SF0984				D						Light Beige				Light Beige			
SF329Z			O	O		O		O		Malibu	Ghostgum Flint	Malibu					
SF375B			O	O						Malt Matt				Malt Matt			
SF153Z				O		O		O		Mandarin	Mandarin						

## Döllken ABS Edgebanding Reference Chart - Solid Colours 'SF' Type

Colour Code	Availability									SURTECO Colour Name	Laminex	Formica	CHH ColourPyne	Polytec	D & R Hendersons	Borgs (Parbury)	Melteca
	19x1 mm	21x0.8 mm	21x1 mm	22x2 mm	29x1 mm	29x2 mm	38x1 mm	38x2 mm	55x2 mm								
SF153Z10			O	O						Mandarin (Stp)	Mandarin						
SF977B			O	S						Marble Beige		Marble Beige			Pearl		
SF488C				D						Marina		Marina					
SF357Z			D	D						Marina Grey				Marina Grey			
SF018Z			S	D					D	Marl Beige	Marl Beige				Caramel		Champagne
SF167Z			O	O						Memphis Blue		Memphis Blue			Graceland Blue		
SF011Z			O	O						Memphis Red	Flame Heath (*Deleted)	Memphis Red	Bright Red				
SF528C				D						Merlot				Merlot			
SF086Z						D		D		Metallic Pearl							
SF053Z				C		O		O		Midnight	Midnight						
SF053Z10			S	O		O				Midnight (Stp)	Midnight					Indigo	
SF477C				D						Milk Chocolate		Milk Chocolate					
SF098Z				S						Mist Grey				Mist Grey		Cloud	
SF006Z				S						Mistral Blue			Noosa Blue		Teal Blue	Shadow Blue	New Mistral Blue
SF973B			O	S		O		O		Mocha		Mocha	Macchiato				
SF029Z			S	C		C		C		Moleskin	Moleskin						
SF302B			O	S						Moonstone	Moonstone						
SF197Z				D						Moss Grey				Moss Grey			
SF337Z				O						Moss Grey				Moss Grey			
SF295A				O		D				Mountain Pepper			Sandstone	Mountain Pepper (deleted)			Oyster
SF295A10			O	D						Mountain Pepper (Stp)			Sandstone	Mountain Pepper (deleted)			Oyster
SF985B			O	S						Mulga		Mulga					



## Döllken ABS Edgebanding Reference Chart - Solid Colours 'SF' Type

Colour Code	Availability									SURTECO Colour Name	Laminex	Formica	CHH ColourPyne	Polytec	D & R Hendersons	Borgs (Parbury)	Melteca
	19x1 mm	21x0.8 mm	21x1 mm	22x2 mm	29x1 mm	29x2 mm	38x1 mm	38x2 mm	55x2 mm								
SF204Z				C		C		C		New Antique White	New Antique White		New Antique White			Antique White / Vintage White	
SF204Z10			C	C						New Antique White (Stp)	New Antique White		New Antique White			Antique White / Vintage White	
SF452A				D						New Champagne							New Champagne
SF033Z			S	C		D				Oatmeal	Oatmeal						New Double Cream
SF314C				S		D		D		Olive	Olive						
SF314C10			O	O						Olive (Stp)	Olive						
SF359C				O		O		O		Olympia Blue	Olympia Blue		Primary Blue				
SF359C10			O	O						Olympia Blue (Stp)	Olympia Blue		Primary Blue				
SF280A			O	O						Olympia Green	Olympia Green	Memphis Green					
SF144Z			O	O						Olympia Orange	Olympia Orange						
SF110Z			O	O						Olympia Red	Olympia Red						
SF149Z				O				O		Olympia Yellow Flint	Olympia Yellow Flint				Olympus Yellow		
SF149Z10			O	O						Olympia Yellow Flint (Stp)	Olympia Yellow Flint				Olympus Yellow		
SF712C			C	C		C		C		Oyster Grey (L)	Oyster Grey	Seal Grey					
SF6241				D						Oyster Grey (BG)			Oyster Grey				
SF092Z				D						Panacotta	Dune	Panacotta					
SF079Z				D						Pansy		Pansy					
SF020Z			S	C		C		C		Paperbark	Paperbark						
SF679A				C		C		C		Parchment (L)	Parchment	Gentle Beige	Almond Sand		Porcelain		
SF679A10			C	C						Parchment (L) (Stp)	Parchment	Gentle Beige	Almond Sand		Porcelain		
SF624A				O						Parchment (BG)				Parchment			
SF138B			O	O						Peacock	Peacock						

## Döllken ABS Edgebanding Reference Chart - Solid Colours 'SF' Type

Colour Code	Availability									SURTECO Colour Name	Laminex	Formica	CHH ColourPyne	Polytec	D & R Hendersons	Borgs (Parbury)	Melteca
	19x1 mm	21x0.8 mm	21x1 mm	22x2 mm	29x1 mm	29x2 mm	38x1 mm	38x2 mm	55x2 mm								
SF032Z			O	O				O		Pearl Grey	Pearl Grey						
SF285C			O	O		D		D		Peat	Peat						
SF990B				D						Periwinkle		Periwinkle					
SF206Z			O	O		O		O		Peruvian Clay	Peruvian Clay				New Oyster		
SF198Z				O						Persimmon	Persimmon						
SF039Z			S	S				O		Pewter	Pewter						Steel Grey
SF166Z				O		O		O		Pillarbox	Pillarbox						
SF166Z10			O	O						Pillarbox (Stp)	Pillarbox						
SF133Z			D	D						Plantation	Plantation						
SF082Z				C		C		C		Polar White	Polar White	Snowdrift	Accent White	Designer White	Sheer White		New Designer White
SF082Z10			S	C		C				Polar White (Stp)	Polar White	Snowdrift	Accent White	Designer White	Sheer White		New Designer White
SF366Z			O							Polar White Matt				Polar White Matt			
SF081Z			O	O						Pomegranate		Pomegranate					
SF978B				D						Pool		Pool					
SF268Z						D				Porcelain				Porcelain			
SF304Z			O	O						Posie Flint	Posie Flint						
SF030Z			O	C		C		C		Prairie Beige		Prairie Beige					
SF260Z			O							Primary Red			Primary Red				
SF463B				O						Provence Blue							Provence Blue
SF222Z			O	O		O		O		Pumice	Pumice						
SF307Z			O	O						Purely Purple Flint	Purely Purple Flint						
SF475C			D	D						Putty		Putty					

## Döllken ABS Edgebanding Reference Chart - Solid Colours 'SF' Type

Colour Code	Availability									SURTECO Colour Name	Laminex	Formica	CHH ColourPyne	Polytec	D & R Hendersons	Borgs (Parbury)	Melteca
	19x1 mm	21x0.8 mm	21x1 mm	22x2 mm	29x1 mm	29x2 mm	38x1 mm	38x2 mm	55x2 mm								
SF147Z			O	O						Raspberry	Raspberry						
SF056C			O	S						Raw Linen	Raw Linen						
SF047Z				D						Reef	Reef						
SF957B				D						Rose Bisque		Rose Bisque					
SF115Z			D	D						Royal	Royal						
SF968B			O	O		D		D		Sable		Sable					
SF489B				D						Sahara						Sahara	
SF220Z			O	O						Sail White		Sail White					
SF451B				D						Sandstone		Sandstone					
SF949B			S	C		S		S		Sarsen Grey	Sarsen Grey	Mist Grey			Saxon Grey		Dusty Grey
SF331Z			O	O		O		O		Sarum Grey		Sarum Grey					
SF988B			D	D						Savannah		Savannah					
SF712C			C	C		C		C		Seal Grey	Oyster Grey	Seal Grey					
SF567C				D						Seaspray		Seaspray					
SF287Z			O	O						Sensation	Sensation						
SF962B				D						Serenity		Serenity					
SF526C				D						Shiraz		Shiraz					
SF008Z				C		S		O		Silver Grey	Silver Grey	Opal Grey	Mist Grey		Sovereign Grey		New Silver Grey
SF008Z10			C	O						Silver Grey (Stp)	Silver Grey	Opal Grey	Mist Grey		Sovereign Grey		New Silver Grey
SF275Z			O	O						Sorrel	Sorrel						
SF170Z			O	O		O		O		Sphinx	Sphinx						
SF340Z			O	C		S				Steel Blue	Steel Blue				Teal		Mistral Blue

## Döllken ABS Edgebanding Reference Chart - Solid Colours 'SF' Type

Colour Code	Availability									SURTECO Colour Name	Laminex	Formica	CHH ColourPyne	Polytec	D & R Hendersons	Borgs (Parbury)	Melteca	
	19x1 mm	21x0.8 mm	21x1 mm	22x2 mm	29x1 mm	29x2 mm	38x1 mm	38x2 mm	55x2 mm									
SF010Z				C		S				Stock Grey								
SF025Z			S	C				D		Stone Beige	Stone Beige					Beige		
SF825C			O	O						Stone Grey Matt						Stone Grey Matt		
SF019Z			O	C		S		O		Storm		Storm	Storm Grey		Storm Grey			New Charcoal Grey
SF334Z			O	O						Strata Grey				Strata Grey				
SF2528			O	S		O		O		Streetlight		Streetlight						
SF940B				D						Succulent Green		Succulent Green						
SF067Z			O	O						Sunflower		Sunflower						
SF368Z			O							Super White Flint	Super White Flint							
SF312C				C						Teal	Teal							
SF312C10			S	O						Teal (Stp)	Teal							
SF303Z			O	O						Tenderfoot Flint	Tenderfoot Flint							
SF298B				D		D				Terracotta	Terracotta							
SF221Z			O	O						Thistle		Thistle						
SF365Z			O	O		O		O		Tornado Flint	Tornado Flint							
SF089Z				D						Tribe	Tribe							
SF040Z			D	D						Twine	Twine				Pearl			
SF323C				D						Ultramarine		Ultramarine						
SF041Z			O	D						Vanilla	Vanilla						Pongee	
SF942B			D	D						Vanilla Smoothie		Vanilla Smoothie						
SF5854			D	D						Vellum		Vellum (*Deleted)						
SF476C				C		C		C		Velveteen		Velveteen						

## Döllken ABS Edgebanding Reference Chart - Solid Colours 'SF' Type

Colour Code	Availability									SURTECO Colour Name	Laminex	Formica	CHH ColourPyne	Polytec	D & R Hendersons	Borgs (Parbury)	Melteca
	19x1 mm	21x0.8 mm	21x1 mm	22x2 mm	29x1 mm	29x2 mm	38x1 mm	38x2 mm	55x2 mm								
SF476C10			O	C						Velveteen (Stp)		Velveteen				Shadow	
SF6248		D	C	C	C	C	C	C	O	White	White	Warm White			White		New Classic White
SF624810	C		C	C	C	C	C	C		White (Stp)	White (Stp)	Warm White (Stp)			White (Stp)		New Classic White (Stp)
SF624808				S						White (Wgn)				White Ash	White Ash		
SF712E			O							White (CHH)			White				
SF128Z			O							White Pepper						White Pepper	
SF311C				D						Willow	Willow						
SF015Z				C		C		C		Wiluna White		Antique Wiluna White	Antique White	Antique White	Antique Cream	Fleece	New Cream
SF015Z10			C	C						Wiluna White (Stp)		Antique Wiluna White	Antique White	Antique White (Stp)	Antique Cream	Fleece	New Cream
SF015Z08				D						Wiluna White (Wgn)		Antique Wiluna White		Antique Ash			

ABS 'SF' colours non-binding colour recommendation

C=Commodity Range S=Standard Range O=Option Range 4=Gloss 4 Pricing 5 = Gloss 5 Pricing D=will become off-range when stocks are depleted.

**Döllken ABS Edgebanding Reference Chart - Surface Print 'DC' Type & Woodgrain Throughout 'DM' Type**

Colour Code	Availability							SURTECO Colour Name	Laminex	Formica	CHH ColourPyne	Polytec	D & R Hendersons	Borgs (Parbury)	Melteca	EGR
	21x1 mm	23x1 mm	22x2 mm	29x2 mm	38x1 mm	38x2 mm	42x2 mm									
DCZ628	O							Acacia Grove Naturale			Acacia Grove Naturale					
DCZ39623	5							Accent White Gloss			Accent White Gloss	Polar White Sheen				
DC469H23	5		5					Alabaster Gloss				Alabaster Gloss				
DC4Z8423	5		5					Alabaster Sheen				Alabaster Sheen				
DC725W45		6						Alabaster Stylelite GL6								Alabaster Stylelite
DC49Z3	O							Alaskan	Alaskan							
DM812Z			O	O		O		Alaskan	Alaskan							
DC65Z623	5							Alaskan Gloss	Alaskan Gloss							
DCZ246	O							Alaskan Nuance	Alaskan Nuance							
DM845Z			O					Alaskan Nuance	Alaskan Nuance							
DCZ148			O					Alexandria Stone	Alexandria Stone							
DC618X23	5							Almond Sand Gloss			Almond Sand Gloss					
DC192Q	S		C	C		C		Aluminium								
DC4Z56	O		O					Aluminium (BG)				Aluminium				
DC447Z			D					Aluwave		Aluwave						
DC506Q	O		O	O				Amari Oak	Amari Oak							
DM238T			S	S		S		Amari Oak	Amari Oak							
DCZ309	O							Amari Oak Riven	Amari Oak Riven							
DM867Z			D	O				Amari Oak Riven	Amari Oak Riven							
DCZ43923	5							Amaro Sheen				Amaro Sheen				
DC648Z	D		D	D				Antelope Strata			Antelope Strata					
DC60Z123	D		D					Antique Gloss				Antique Gloss				
DC4Z9723	5		D					Antique Sheen				Antique Sheen				
DC4Z2223	5							Antique Wiluna White Gloss		Antique Wiluna White Gloss						
DCZ626	O							Antoga Wenge Naturale			Antoga Wenge Naturale					
DC369N			D					Apple Tree				Apple Tree				
DCZ34545		6						Arctic Ice Gloss				Arctic Ice Gloss				
DCZ37745		6						Arctic Stylelite GL6								Arctic Stylelite

**Döllken ABS Edgebanding Reference Chart - Surface Print 'DC' Type & Woodgrain Throughout 'DM' Type**

Colour Code	Availability							SURTECO Colour Name	Laminex	Formica	CHH ColourPyne	Polytec	D & R Hendersons	Borgs (Parbury)	Melteca	EGR
	21x1 mm	23x1 mm	22x2 mm	29x2 mm	38x1 mm	38x2 mm	42x2 mm									
DC4Z45	O		O	O				Artisan Oak				Artisan Oak				
DCZ34945		6						Ash Stylelite GL6								Ash Stylelite
DC64Z223	5							Ash White Gloss	Ash White Gloss							
DCZ295	O		O					Ash White Riven	Ash White Riven							
DCZ429	O		O	O				Ash Woodline		Ash Woodline						
DCZ42323	5							Ash Woodline Gloss		Ash Woodline Gloss						
DC993U	D		D					Ash Zebrano				Ash Zebrano				
DC40Z5	D		D					Aurum		Aurum						
DM468S			D					Autumn Cherry							Autumn Cherry	
DCZ232				D				Avenue Natural	Avenue Natural							
DC4Z80	O							Avignon Walnut	Avignon Walnut							
DM829Z			O					Avignon Walnut	Avignon Walnut							
DCZ35423	5							Avignon Walnut Gloss	Avignon Walnut Gloss							
DCZ311	O							Avignon Walnut Riven	Avignon Walnut Riven							
DC138V	D		D					Avon Beech				Avon Beech				
DCZ45423	5							Balsa Fineline Gloss			Balsa Fineline Gloss					
DCZ623	O							Balsa Fineline Naturale			Balsa Fineline Naturale					
DM121S			D					Baltic Pine		Baltic Pine	Baltic Pine		Baltic Pine			
DM273T			D			D		Barcelona Cherry		Barcelona Cherry						
DC50Z3	O		O					Basalt	Basalt							
DCZ270	O		O					Baye Nuance	Baye Nuance							
DCZ296	O		O			O		Baye Riven	Baye Riven							
DC458Z	C		C	C		C		Beech		Golden Beech						
DC4Z46	O		O					Belgian Oak				Belgian Oak				
DC4Z2123	5							Birch Gloss		Birch Gloss						
DC50Z423		5						Black Gloss								
DC21J423	5							Black Gloss (L)	Black Gloss					Black Gloss		
DCZ62728	O							Black Naturale			Black Naturale					

**Döllken ABS Edgebanding Reference Chart - Surface Print 'DC' Type & Woodgrain Throughout 'DM' Type**

Colour Code	Availability							SURTECO Colour Name	Laminex	Formica	CHH ColourPyne	Polytec	D & R Hendersons	Borgs (Parbury)	Melteca	EGR
	21x1 mm	23x1 mm	22x2 mm	29x2 mm	38x1 mm	38x2 mm	42x2 mm									
DCZ443	O							Black Wenge				Black Wenge				
DCZ406	O							Black Wenge Ravine				Black Wenge Ravine				
DCZ651	O							Blackened Elm Natural	Blackened Elm Natural							
DM881Z			O	O			O	Blackened Elm Natural	Blackened Elm Natural							
DCZ652	O							Blackened Elm Riven	Blackened Elm Riven							
DC49Z2	O		O	O				Blackened Linewood	Blackened Linewood							
DM811Z			O	O			O	Blackened Linewood	Blackened Linewood							
DC64Z023	5							Blackened Linewood Gloss	Blackened Linewood Gloss							
DCZ228	O							Blackened Linewood Nuance	Blackened Linewood Nuance							
DM840Z			O	O			O	Blackened Linewood Nuance	Blackened Linewood Nuance							
DC574Z	D							Blackwood		Blackwood						
DM771Z			D					Blackwood		Blackwood						
DC587Z			O					Bleached Elm					Bleached Elm			
DC8577	D							Bleached Pear			Bright Pear					
DC443Q	O		O					Bleached Reed	Bleached Reed							
DCZ615	O							Bleached Walnut Ravine				Bleached Walnut Ravine				
DCZ234	O							Bleached Wenge Natural	Bleached Wenge Natural							
DM843Z			O					Bleached Wenge Natural	Bleached Wenge Natural							
DCZ308	O							Bleached Wenge Riven	Bleached Wenge Riven							
DM866Z			D					Bleached Wenge Riven	Bleached Wenge Riven							
DC69Z6	O			D				Bliss Cinder		Bliss Cinder						
DC69Z1	O		O	O			D	Bliss Shitake		Bliss Shitake						
DC607P			O	D				Bonde Beech					Bonde Beech			
DC4Z85	O							Brescia	Brescia							
DM832Z			O	D			D	Brescia	Brescia							
DCZ35623	D							Brescia Gloss	Brescia Gloss							
DCZ59023	5							Brescia Silk	Brescia Silk							
DC045W	O		O	D			D	Bronzeworks	Bronzeworks							



**Döllken ABS Edgebanding Reference Chart - Surface Print 'DC' Type & Woodgrain Throughout 'DM' Type**

Colour Code	Availability							SURTECO Colour Name	Laminex	Formica	CHH ColourPyne	Polytec	D & R Hendersons	Borgs (Parbury)	Melteca	EGR
	21x1 mm	23x1 mm	22x2 mm	29x2 mm	38x1 mm	38x2 mm	42x2 mm									
DCZ433	O		O	O		O		Brushed Nickel		Brushed Nickel						
DCZ632	O		O	O		O		Brushed Silver		Brushed Silver						
DCZ421	O		O					Brushed Zinc		Brushed Zinc						
DCZ465	O		O					Brushwood		Brushwood						
DC683Z			O					Burma Teak			Burma Teak					
DC542Z	O		O	O				Burnished Wood	Burnished Wood							
DM736Z			O	O		O		Burnished Wood	Burnished Wood							
DCZ251	O							Burnished Wood Nuance	Burnished Wood Nuance							
DM850Z			O			D		Burnished Wood Nuance	Burnished Wood Nuance							
DCZ585	5							Burnished Wood Silk	Burnished Wood Silk							
DCZ464	O		O					Burnt Strand		Burnt Strand						
DC4Z70	D		D					Cabernet Micro				Cabernet Micro				
DC499Z			D					Cacao Tempo		Cacao Tempo						
DC133X23			D					Cafe Cream Sheen / Café Cream Gloss				Cafe Cream Sheen / Café Cream Gloss				
DCZ27823	5		D					Cafe Cream Sheen / Café Cream Gloss				Cafe Cream Sheen / Café Cream Gloss				
DC591Z	O		D					Café Crumble			Café Crumble					
DCZ45623	5							Café Crumble Gloss			Café Crumble Gloss					
DCZ570	O		O	O				Café Oak Ravine				Café Oak Ravine				
DC50Z2	D							Caper Berry	Caper Berry							
DM821Z			D					Caper Berry	Caper Berry							
DC58Z323	5		5					Cappuccino Gloss				Cappuccino Gloss				
DC4Z6623	5		5					Caraway Sheen / Caraway Gloss				Caraway Sheen / Caraway Gloss				
DC4Z69	O		O					Carbon Micro				Carbon Micro				
DC4Z6023	5							Carbon Micro Gloss				Carbon Micro Gloss				
DCZ48845		6						Carbon Stylelite GL6								Carbon Stylelite
DC488Z	D		D					Cashmere		Cashmere						
DCZ440	O							Cavia Lini			Ebony Finline	Cavia Lini				
DCZ46023	5							Cavia Lini Sheen				Cavia Lini Sheen				

**Döllken ABS Edgebanding Reference Chart - Surface Print 'DC' Type & Woodgrain Throughout 'DM' Type**

Colour Code	Availability							SURTECO Colour Name	Laminex	Formica	CHH ColourPyne	Polytec	D & R Hendersons	Borgs (Parbury)	Melteca	EGR
	21x1 mm	23x1 mm	22x2 mm	29x2 mm	38x1 mm	38x2 mm	42x2 mm									
DC235K			D					Caviar		Caviar						
DC4Z81	O							Chalky Teak	Chalky Teak							
DM830Z			O					Chalky Teak	Chalky Teak							
DCZ235	O							Chalky Teak Nuance	Chalky Teak Nuance							
DM844Z			O					Chalky Teak Nuance	Chalky Teak Nuance							
DCZ238	O		O					Chamois Nuance	Chamois Nuance							
DCZ32945		6						Champagne Stylelite GL6								Champagne Stylelite
DCZ472	O		O					Char Oak				Char Oak				
DCZ810	O							Char Oak Ravine				Char Oak Ravine				
DC144K			D					Charcoal Fusion		Charcoal Fusion						
DC64Z723	5							Charcoal Gloss	Charcoal Gloss							
DCZ749	O							Charcoal Haze			Charcoal Haze					
DCZ299	O		O	O		O		Charcoal Riven	Charcoal Riven							
DC500Z						D		Charcoal Tempo		Charcoal Tempo						
DC595Z	O		O					Charred Oak (CHH)			Charred Oak					
DC46Z0	O							Charred Oak (F)		Charred Oak						
DM800Z			C	C		C		Charred Oak (F)		Charred Oak						
DCZ45823	5							Charred Oak Gloss (CHH)			Charred Oak Gloss					
DCZ58823	5							Charred Oak Gloss (15) (F)		Charred Oak Gloss						
DC595Z28	O							Charred Oak Naturale			Charred Oak Naturale					
DCZ432	O		O	O		O		Charred Woodline		Charred Woodline						
DC50Z1	O							Cherished Wood	Cherished Wood							
DM820Z			O					Cherished Wood	Cherished Wood							
DCZ288	O							Cherished Wood Riven	Cherished Wood Riven							
DM859Z			D					Cherished Wood Riven	Cherished Wood Riven							
DC416Z	O							Cherry		Cherry						
DM702Z			C	C		C		Cherry		Cherry						
DC562Z			O			O		Cherry Latte					Cherry Latte			

**Döllken ABS Edgebanding Reference Chart - Surface Print 'DC' Type & Woodgrain Throughout 'DM' Type**

Colour Code	Availability							SURTECO Colour Name	Laminex	Formica	CHH ColourPyne	Polytec	D & R Hendersons	Borgs (Parbury)	Melteca	EGR
	21x1 mm	23x1 mm	22x2 mm	29x2 mm	38x1 mm	38x2 mm	42x2 mm									
DCZ644	O							Cherry Riftwood Natural	Cherry Riftwood Natural							
DCZ645	O							Cherry Riftwood Nuance	Cherry Riftwood Nuance							
DCZ43445		6						Cherry Stylelite GL6								Cherry Stylelite
DCZ576	O							Chestnut Grove			Chestnut Grove					
DCZ57628	O							Chestnut Grove Naturale			Chestnut Grove Naturale					
DC4Z86	O		O					Chichi	Chichi							
DCZ314	O		D					Chichi Nuance	Chichi Nuance							
DC543Z	O			D				Chocolate Pear		Chocolate Pear			Concept Oak			
DM740Z			O	O		O		Chocolate Pear		Chocolate Pear						
DCZ794	D							Chocolate Walnut			Chocolate Walnut				Dark Oak	
DCZ795	D							Chocolate Walnut Naturale			Chocolate Walnut Naturale				Dark Oak	
DCZ420	O		O	O		O		Cinnamon Ash		Cinnamon Ash						
DCZ41723	D							Cinnamon Ash Gloss		Cinnamon Ash Gloss						
DCZ59523	5							Cinnamon Ash Gloss (15)		Cinnamon Ash Gloss						
DC592Z			D					Cinnamon Crumble			Cinnamon Crumble					
DC4Z50	D		D					Cinnamon Spruce				Cinnamon Spruce				
DM628T			D					Cinnamon Spruce				Cinnamon Spruce				
DC833M			D					Citron Strata		Citron Strata						
DC490U	D							Classic Beech	Classic Beech							
DM230T			D					Classic Beech	Classic Beech							
DC69Z423	5							Classic Beige Gloss	Classic Beige Gloss							
DC822M	D		D					Classic Cherry		Classic Cherry						
DM218T			D	D				Classic Cherry		Classic Cherry						
DCZ28323	5		D	5		5		Classic White Gloss				Classic White Gloss				
DCZ656	O							Clay Textile Natural	Clay Textile Natural							
DC0L6623	5							Coastal Elm Gloss			Coastal Elm Gloss					
DCZ45028	O							Coastal Elm Naturale			Coastal Elm Naturale					
DCZ450	O							Coastal Elm Velvet			Coastal Elm Velvet					

**Döllken ABS Edgebanding Reference Chart - Surface Print 'DC' Type & Woodgrain Throughout 'DM' Type**

Colour Code	Availability							SURTECO Colour Name	Laminex	Formica	CHH ColourPyne	Polytec	D & R Hendersons	Borgs (Parbury)	Melteca	EGR
	21x1 mm	23x1 mm	22x2 mm	29x2 mm	38x1 mm	38x2 mm	42x2 mm									
DM629T			D					Cocoa Spruce				Cocoa Spruce				
DC4Z36	D							Cocoa Spruce 2				Cocoa Spruce 2				
DC4Z7523	D							Cocoa Spruce Sheen				Cocoa Spruce Sheen				
DM705Z			D					Cognac Pearwood								
DCZ637	O							Concrete Formwood Natural	Concrete Formwood Natural							
DCZ638	O							Concrete Formwood Riven	Concrete Formwood Riven							
DC558Z			O					Concrete Haze					Concrete Haze			
DCZ291	O		O					Copycat Natural	Copycat Natural							
DC0L5823	5							Coronet Beech Gloss			Coronet Beech Gloss					
DCZ45228	O							Coronet Beech Naturale			Coronet Beech Naturale					
DCZ452	O							Coronet Beech Velvet			Coronet Beech Velvet					
DCZ431	O		O					Country Cherry		Country Cherry						
DCZ902	O							Crema Lini Matt				Crema Lini Matt				
DC496Z	D							Crossfire Maple		Crossfire Maple						
DM727Z			D	D				Crossfire Maple		Crossfire Maple						
DCZ09423		5						Crystal Diamond Gloss	Crystal Diamond Gloss							
DCZ09823		D						Crystal Lapis Gloss	Crystal Lapis Gloss							
DCZ09223		5						Crystal Palladium Gloss	Crystal Palladium Gloss							
DCZ09923		D						Crystal Platinum Gloss	Crystal Platinum Gloss							
DCZ10123		D						Crystal Rubalite Gloss	Crystal Rubalite Gloss							
DCZ10423		D						Crystal Tourmaline Gloss	Crystal Tourmaline Gloss							
DCZ430	O		O					Cuban Wood		Cuban Wood						
DCZ42823	D							Cuban Wood Gloss		Cuban Wood Gloss						
DCZ58723	5							Cuban Wood Gloss (15)		Cuban Wood Gloss						
DCZ277	S		O	O				Curly Birch	Curly Birch				Rotary Birch			
DM839Z			D	D				Curly Birch	Curly Birch				Rotary Birch			
DM857Z			C	C		C		Curly Birch	Curly Birch				Rotary Birch			
DC108V	O		O	O				Dansk Maple	Dansk Maple							

**Döllken ABS Edgebanding Reference Chart - Surface Print 'DC' Type & Woodgrain Throughout 'DM' Type**

Colour Code	Availability							SURTECO Colour Name	Laminex	Formica	CHH ColourPyne	Polytec	D & R Hendersons	Borgs (Parbury)	Melteca	EGR
	21x1 mm	23x1 mm	22x2 mm	29x2 mm	38x1 mm	38x2 mm	42x2 mm									
DM779T			C	O		O		Dansk Maple	Dansk Maple							
DCZ12723	D							Dansk Maple Gloss	Dansk Maple Gloss							
DC838P	O		O	O				Dark Walnut					Dark Walnut			
DM838Z			O			O		Dark Wengeblock	Dark Wengeblock							
DC424Z			O					Derwent Pear				Derwent Pear				
DC49Z1	O							Divine Oak	Divine Oak							
DM810Z			O					Divine Oak	Divine Oak							
DCZ13823	5							Divine Oak Gloss	Divine Oak Gloss							
DCZ256	O							Domain Natural	Domain Natural							
DM852Z			O					Domain Natural	Domain Natural							
DCZ272	O							Domain Nuance	Domain Nuance							
DM854Z			D					Domain Nuance	Domain Nuance							
DCZ303	O							Domain Riven	Domain Riven							
DCZ586	5							Domain Silk	Domain Silk							
DCZ405	O							Drifted Oak Ravine				Drifted Oak Ravine				
DC0L6023	5							Dusky Elm Gloss			Dusky Elm Gloss					
DCZ45128	O							Dusky Elm Naturale			Dusky Elm Naturale					
DCZ451	O							Dusky Elm Velvet			Dusky Elm Velvet					
DCZ149			O			O		Earthy	Earthy							
DC48Z0	O							Ebony Bellezza								
DM809Z			O					Ebony Bellezza	Ebony Bellezza							
DC66Z123	5							Ebony Bellezza Gloss	Ebony Bellezza Gloss							
DCZ44028	O							Ebony Fineline Naturale			Ebony Fineline Naturale					
DC620Z	O							Ebony Macassar	Ebony Macassar							
DM765Z			O	O		O		Ebony Macassar	Ebony Macassar							
DC66Z023	5							Ebony Macassar Gloss	Ebony Macassar Gloss							
DC94J8	O		D					Ebony Wood				Ebony Wood				
DC092X	D							Echelon Redwood	Echelon Redwood				Jarrah			

**Döllken ABS Edgebanding Reference Chart - Surface Print 'DC' Type & Woodgrain Throughout 'DM' Type**

Colour Code	Availability							SURTECO Colour Name	Laminex	Formica	CHH ColourPyne	Polytec	D & R Hendersons	Borgs (Parbury)	Melteca	EGR
	21x1 mm	23x1 mm	22x2 mm	29x2 mm	38x1 mm	38x2 mm	42x2 mm									
DM231T			D	D				Echelon Redwood	Echelon Redwood				Jarrah			
DC519Q	O		O					Eclipse	Eclipse							
DC51Z8	D							Elegance	Elegance							
DM822Z			D					Elegance	Elegance							
DC65Z123	D							Elegance Gloss	Elegance Gloss							
DCZ633	O							Elegant Oak Natural	Elegant Oak Natural							
DM876Z			O	O		O		Elegant Oak Natural	Elegant Oak Natural							
DCZ634	O							Elegant Oak Riven	Elegant Oak Riven							
DM875Z			O			O		Elegant Oak Riven	Elegant Oak Riven							
DM836Z			O					Endula Macassar	Endula Macassar							
DC48Z9	O		O					Energy Stream	Energy Stream							
DC65Z823	D							Energy Stream Gloss	Energy Stream Gloss							
DC64Z423	5							Espresso Gloss	Espresso Gloss							
DC601Z	O							Espresso Ligna	Espresso Ligna							
DM766Z			O	O		O		Espresso Ligna	Espresso Ligna							
DCZ252	O							Espresso Ligna Nuance	Espresso Ligna Nuance							
DM851Z			D	D		D		Espresso Ligna Nuance	Espresso Ligna Nuance							
DCZ58923	5							Espresso Ligna Silk	Espresso Ligna Silk							
DCZ300	O							Espresso Riven	Espresso Riven							
DC098P	O							Euro Beech		Euro Beech			Sonova Beech			
DM049T			S	S		S		Euro Beech		Euro Beech						
DCZ425	O		O	O		O		Finesse Sand		Finesse Sand						
DCZ42223	5							Finesse Sand Gloss		Finesse Sand Gloss						
DCZ426	O		O	O		O		Finesse Stone		Finesse Stone						
DCZ427	O		O					Finesse Taupe		Finesse Taupe						
DC44Z0	O							Fini Blonde		Fini Blonde						
DM798Z			O	D		D		Fini Blonde		Fini Blonde						
DC43Z1	O							Fini Chocolate		Fini Chocolate						

**Döllken ABS Edgebanding Reference Chart - Surface Print 'DC' Type & Woodgrain Throughout 'DM' Type**

Colour Code	Availability							SURTECO Colour Name	Laminex	Formica	CHH ColourPyne	Polytec	D & R Hendersons	Borgs (Parbury)	Melteca	EGR
	21x1 mm	23x1 mm	22x2 mm	29x2 mm	38x1 mm	38x2 mm	42x2 mm									
DM795Z			S	D			D	Fini Chocolate		Fini Chocolate						
DC4Z1823	D							Fini Chocolate Gloss		Fini Chocolate Gloss						
DCZ59223	5							Fini Chocolate Gloss (15)		Fini Chocolate Gloss						
DC45Z1	O							Fini Wenge		Fini Wenge						
DM796Z			O	D				Fini Wenge		Fini Wenge						
DC0L5623	5							Fiordland Elm Gloss			Fiordland Elm Gloss					
DCZ45328	O							Fiordland Elm Naturale			Fiordland Elm Naturale					
DCZ453	O							Fiordland Elm Velvet			Fiordland Elm Velvet					
DCZ575	O							Flaxen Grove			Flaxen Grove					
DCZ57528	O							Flaxen Grove Naturale			Flaxen Grove Naturale					
DC344P			D	D				Flinders Pear				Flinders Pear				
DC446Q	D		D	D				Flute Contour	Flute Contour							
DC64Z323	5							Fossil Gloss	Fossil Gloss							
DCZ271	O		O	O				Fossil Nuance	Fossil Nuance							
DCZ301	O			O				Fossil Riven	Fossil Riven							
DM056T			D					French Pear		French Pear			Champagne Pear			
DC621Z	O							Fudge Stream	Fudge Stream							
DM767Z			D					Fudge Stream	Fudge Stream							
DC65Z923	D							Fudge Stream Gloss	Fudge Stream Gloss							
DC4Z94	O		O	D				Gesso Lini				Gesso Lini				
DC4Z6223	5							Gesso Lini Sheen				Gesso Lini Sheen				
DM050T			D					Golden Apple		Golden Apple						
DC4Z6423	5		5					Graphite Gloss				Graphite Gloss				
DCZ33145		6						Graphite Stylelite GL6								Graphite Stylelite
DCZ44823	5							Greige Sheen				Greige Sheen				
DCZ662	O							Greige Textile Natural	Greige Textile Natural							
DC4Z02	O		O	O				Habitat		Habitat						
DCZ034	O							Hakata	Hakata							

**Döllken ABS Edgebanding Reference Chart - Surface Print 'DC' Type & Woodgrain Throughout 'DM' Type**

Colour Code	Availability							SURTECO Colour Name	Laminex	Formica	CHH ColourPyne	Polytec	D & R Hendersons	Borgs (Parbury)	Melteca	EGR
	21x1 mm	23x1 mm	22x2 mm	29x2 mm	38x1 mm	38x2 mm	42x2 mm									
DM835Z			O			D		Hakata	Hakata							
DC4Z52			O					Hastings Beech				Hastings Beech				
DC257M	D							Havanna Maple								
DM803S			D	D				Havanna Maple								
DC511Z			O					Hazel Strata				Hazel Strata				
DC52Z223	D		D					Hazel Strata Sheen / Hazel Strata Gloss				Hazel Strata Sheen / Hazel Strata Gloss				
DC043W	O							Hazelnut Wood	Hazelnut Wood							
DM538T			O	O		O		Hazelnut Wood	Hazelnut Wood							
DC676Z			D					Hemp Strata			Hemp Strata					
DCZ647	O							Honey Elm Natural	Honey Elm Natural							
DM879Z			O	O		O		Honey Elm Natural	Honey Elm Natural							
DCZ646	O							Honey Elm Riven	Honey Elm Riven							
DC69Z7	O		O	O		D		Hotham Oak		Hotham Oak						
DCZ13923	5							Hotham Oak Gloss		Hotham Oak Gloss						
DC494Z			O					Hunter Cherry				Hunter Cherry				
DC4Z87	O							Husk	Husk							
DM833Z			O			O		Husk	Husk							
DC4Z76	D		D					Hydra Mesh	Hydra Mesh							
DC485Z			D					Ice Cologne		Ice Cologne						
DC4Z89	O							Ice Veil	Ice Veil							
DM834Z			D					Ice Veil	Ice Veil							
DC69Z3	O		O	O		D		Idyllic		Idyllic						
DCZ13723	5							Idyllic Gloss		Idyllic Gloss						
DM353T			D	D				Indian Teak			Burma Teak				Indian Teak	
DC245J	S		C	C		C		Ironstone	Greystone	Ironstone	Lodestone	Somerstone	Riverstone			
DCZ622	D							Ivory Haze			Ivory Haze					
DCZ257	O		O					Jalapeno Natural	Jalapeno Natural							
DC8750	O							Jarrah		Jarrah	Jarrah					



**Döllken ABS Edgebanding Reference Chart - Surface Print 'DC' Type & Woodgrain Throughout 'DM' Type**

Colour Code	Availability							SURTECO Colour Name	Laminex	Formica	CHH ColourPyne	Polytec	D & R Hendersons	Borgs (Parbury)	Melteca	EGR
	21x1 mm	23x1 mm	22x2 mm	29x2 mm	38x1 mm	38x2 mm	42x2 mm									
DM9337			S					Jarrah		Jarrah	Jarrah				New Mahogany	
DCZ258	O							Jericho Natural	Jericho Natural							
DM853Z			O	O		O		Jericho Natural	Jericho Natural							
DCZ273	O							Jericho Nuance	Jericho Nuance							
DM855Z			O	O				Jericho Nuance	Jericho Nuance							
DCZ591	5							Jericho Silk	Jericho Silk							
DCZ658	O					O		Juicy Nuance	Juicy Nuance							
DC622Z	O							Khaya Mahogany		Khaya Mahogany						
DM708Z			S	S				Khaya Mahogany		Khaya Mahogany						
DC4Z48	D							Kiewa Cherry			Kiewa Cherry					
DCZ57245		6						Lace Stylelite GL6								Lace Stylelite
DCZ45923	5							Latte Lini Sheen			Latte Lini Sheen					
DCZ90145		6						Lavato Oak Stylelite GL6								Lavato Oak Stylelite
DC432Z	O		O	O				Lemon Tree		Lemon Tree						
DM712Z			C	C		C		Lemon Tree		Lemon Tree						
DC047W	O		O	O				Licorice Linea	Licorice Linea							
DM541T			O	O		O		Licorice Linea	Licorice Linea							
DC55Z123	D							Licorice Linea Gloss	Licorice Linea Gloss							
DCZ304	O							Licorice Linea Riven	Licorice Linea Riven							
DM863Z			O	O		O		Licorice Linea Riven	Licorice Linea Riven							
DCZ57323	5							Licorice Linea Silk (14)	Licorice Linea Silk							
DM128S			D					Light Apple								
DM8350			D					Light Oak				Australian Ash				
DM837Z			O					Light Wengeblock	Light Wengeblock							
DC47Z1	O							Limed Ash		Limed Ash						
DM801Z			O					Limed Ash		Limed Ash						
DM415S			D					Limed White Oak				Limed White Oak				
DM354T			D					Lite Cherry							Lite Cherry	

**Döllken ABS Edgebanding Reference Chart - Surface Print 'DC' Type & Woodgrain Throughout 'DM' Type**

Colour Code	Availability							SURTECO Colour Name	Laminex	Formica	CHH ColourPyne	Polytec	D & R Hendersons	Borgs (Parbury)	Melteca	EGR
	21x1 mm	23x1 mm	22x2 mm	29x2 mm	38x1 mm	38x2 mm	42x2 mm									
DC599Z	O						Lustrous Elm	Lustrous Elm								
DM768Z			O	O			Lustrous Elm	Lustrous Elm								
DC64Z823	5						Lustrous Elm Gloss	Lustrous Elm Gloss								
DCZ249	O						Lustrous Elm Nuance	Lustrous Elm Nuance								
DM848Z			O				Lustrous Elm Nuance	Lustrous Elm Nuance								
DCZ150			O			O	Magma	Magma								
DC45Z2	D						Mahogany Mantra		Mahogany Mantra							
DCZ561	O						Maison Oak Ravine				Maison Oak Ravine					
DCZ41823	5						Malibu Gloss		Malibu Gloss							
DC4Z2923	5		5				Malt Sheen / Malt Gloss				Malt Sheen / Malt Gloss					
DCZ671	O						Mandarin Nuance	Mandarin Nuance								
DC315K	D						Manitoba Crown		Manitoba Crown							
DC418Z	S						Manitoba Figured		Manitoba Figured	Crossfire Maple		Sliced Maple				
DM704Z			C	C			Manitoba Figured		Manitoba Figured	Crossfire Maple						
DC4Z9323	5		5				Marina Grey Sheen				Marina Grey Sheen					
DCZ449	O		O				Marni Lini				Marni Lini					
DCZ44223	5						Marni Lini Sheen				Marni Lini Sheen					
DCZ816	O						Marosa Milan Ravine				Marosa Milan Ravine					
DC447Q	D		D				Mellow Reed	Mellow Reed								
DC47Z2	O						Metro Wood		Metro Wood							
DM802Z			D	D		D	Metro Wood		Metro Wood							
DC513P	O						Milano Walnut	Milano Walnut								
DM214T			S	O		S	Milano Walnut	Milano Walnut								
DCZ14023	5						Milano Walnut Gloss	Milano Walnut Gloss								
DC548Z	O		O	D			Milkwood	Milkwood								
DM733Z			O	O		O	Milkwood	Milkwood								
DC623Z	O						Mocha Ash	Mocha Ash								
DM739Z			O				Mocha Ash	Mocha Ash								

**Döllken ABS Edgebanding Reference Chart - Surface Print 'DC' Type & Woodgrain Throughout 'DM' Type**

Colour Code	Availability							SURTECO Colour Name	Laminex	Formica	CHH ColourPyne	Polytec	D & R Hendersons	Borgs (Parbury)	Melteca	EGR
	21x1 mm	23x1 mm	22x2 mm	29x2 mm	38x1 mm	38x2 mm	42x2 mm									
DC593Z	O		O	D				Mocha Finline			Mocha Finline					
DCZ419	O		O					Mocha Firwood		Mocha Firwood						
DCZ42423	5							Mocha Firwood Gloss		Mocha Firwood Gloss						
DCZ463	O		O					Mocha Strand		Mocha Strand						
DC53Z445		6						Mocha Stylelite GL6								Mocha Stylelite
DCZ13623	5							Moleskin Gloss	Moleskin Gloss							
DC4Z74	O		O	O		O		Moose	Moose							
DCZ63923	5							Moose Gloss	Moose Gloss							
DCZ254	O		D	O				Moose Nuance	Moose Nuance							
DC59Z923	5		5					Mountain Pepper Gloss				Mountain Pepper Gloss				
DCZ50923	5							Mulga Gloss		Mulga Gloss						
DC7990			O	O				Multiplex								
DM9980			S	O		S		Multiplex								
DC525Z28	O							Mushroom Finline Naturale			Mushroom Finline Naturale					
DC525Z	O		O	D				Mushroom Linea	Mushroom Linea		Mushroom Finline					
DM747Z			O	O		O		Mushroom Linea	Mushroom Linea							
DC53Z623	5							Mushroom Linea Gloss	Mushroom Linea Gloss							
DCZ310	O							Mushroom Linea Riven	Mushroom Linea Riven							
DM868Z			O					Mushroom Linea Riven	Mushroom Linea Riven							
DC594Z	D							Myanmar Teak			Myanmar Teak					
DC338K				D				Myrtle					Myrtle			
DM787Z			D					Namoi Cherry				Namoi Cherry				
DC4Z53	O		O	D				Native Zebrano				Native Zebrano				
DC44Z9	D							Natural Beech		Natural Beech						
DM794Z			D					Natural Beech		Natural Beech						
DC439P	D							Natural Cherry			Natural Cherry					
DC536Q	D		D					Natural Oak (CHH)			Natural Oak					
DC138W	O							Natural Oak (F)		Natural Oak						

**Döllken ABS Edgebanding Reference Chart - Surface Print 'DC' Type & Woodgrain Throughout 'DM' Type**

Colour Code	Availability							SURTECO Colour Name	Laminex	Formica	CHH ColourPyne	Polytec	D & R Hendersons	Borgs (Parbury)	Melteca	EGR
	21x1 mm	23x1 mm	22x2 mm	29x2 mm	38x1 mm	38x2 mm	42x2 mm									
DM664T			O	O		O		Natural Oak (F)		Natural Oak						
DCZ404	O		O					Natural Oak (BG)				Natural Oak				
DCZ404	O		O	O	O	O		Natural Oak Ravine				Natural Oak Ravine				
DCZ648	O							Natural Walnut	Natural Walnut							
DM878Z			O	O		O		Natural Walnut	Natural Walnut							
DC560Z	O		O	O				Natural Zebrano	Natural Zebrano							
DM738Z			O	O		O		Natural Zebrano	Natural Zebrano							
DCZ248	O							Natural Zebrano Nuance	Natural Zebrano Nuance							
DM847Z			O	O				Natural Zebrano Nuance	Natural Zebrano Nuance							
DC288P			D					Nepean Beech				Nepean Beech				
DC11M823	5							New Antique White Gloss (CHH)			New Antique White Gloss					
DC4Z4223	5							New Antique White Gloss (L)	New Antique White Gloss							
DC4Z9223	5		D					New Antique White Sheen				New Antique White Sheen				
DC51Z723	D		D					New Barron Alder Gloss				New Barron Alder Gloss				
DC296L	D							New Beech					Light Beech		Golden Beech	
DM9969			D					New Beech					Light Beech		Golden Beech	
DC478Z	D		D	D				New Clarity	New Clarity				New Leatherwood			
DC436Q	S		S	O		S		New Graphite	New Graphite							
DC64Z923	5							New Graphite Gloss	New Graphite Gloss							
DCZ253	O		O	O		O		New Graphite Nuance	New Graphite Nuance							
DC579X			O					New Nepean Beech				New Nepean Beech				
DC4Z9123	D		D					New Nepean Beech Sheen				New Nepean Beech Sheen				
DC136Q	S		C	C		S		New Stainless Steel		New Stainless Steel						
DC093X	D							Noble Cherry	Noble Cherry							
DM239T			D					Noble Cherry	Noble Cherry							
DCZ688	5							Nocturne Gloss	Nocturne Gloss							
DC66Z5	O							Nocturne Oak	Nocturne Oak							
DM828Z			O	D		O		Nocturne Oak	Nocturne Oak							

**Döllken ABS Edgebanding Reference Chart - Surface Print 'DC' Type & Woodgrain Throughout 'DM' Type**

Colour Code	Availability							SURTECO Colour Name	Laminex	Formica	CHH ColourPyne	Polytec	D & R Hendersons	Borgs (Parbury)	Melteca	EGR
	21x1 mm	23x1 mm	22x2 mm	29x2 mm	38x1 mm	38x2 mm	42x2 mm									
DC64Z623	5							Nocturne Oak Gloss	Nocturne Oak Gloss							
DCZ287	O							Nocturne Oak Riven	Nocturne Oak Riven							
DM791Z			D					Noosa Cherry				Noosa Cherry				
DC624Z	O							Nordic Birch		Nordic Birch						
DM742Z			S	S				Nordic Birch		Nordic Birch						
DC520Z			S					Nordic Strata				Nordic Strata				
DC665K	O		O	D		D		Ocean Micro	Ocean Micro							
DC59Z223	D							Olympia Orange Gloss	Olympia Orange Gloss							
DCZ312	D							Olympia Orange Nuance	Olympia Orange Nuance							
DCZ657	O							Olympia Yellow Nuance	Olympia Yellow Nuance							
DM790Z			O					Oxley Walnut				Oxley Walnut				
DC789W28	O							Oyster Fineline Naturale		Oyster Fineline Naturale						
DC789W	O		O	O				Oyster Linea	Oyster Linea		Oyster Fineline					
DM535T			O	O		O		Oyster Linea	Oyster Linea							
DC69Z023	5							Oyster Linea Gloss	Oyster Linea Gloss		Oyster Fineline Gloss					
DCZ289	O							Oyster Linea Riven	Oyster Linea Riven							
DM860Z			O					Oyster Linea Riven	Oyster Linea Riven							
DC120W	O							Palisander	Palisander			Blackbean / Qld Teak				
DM262T			D					Palisander	Palisander			Blackbean / Qld Teak				
DCZ35523	5							Paperbark Gloss	Paperbark Gloss							
DC41Z8	D		D					Papiro Chalk		Papiro Chalk						
DC551Y23	5		D					Parchment Gloss (BG)				Parchment Gloss				
DC61Z123	5							Parchment Gloss (L)	Parchment Gloss	Gentle Beige Gloss						
DCZ237	O			D				Parchment Nuance	Parchment Nuance							
DCZ294	O		O					Parchment Riven	Parchment Riven							
DCZ659	O							Peacock Nuance	Peacock Nuance							
DC445Q			D					Pearl Cambric	Pearl Cambric							
DM598S			D					Peartree								

**Döllken ABS Edgebanding Reference Chart - Surface Print 'DC' Type & Woodgrain Throughout 'DM' Type**

Colour Code	Availability							SURTECO Colour Name	Laminex	Formica	CHH ColourPyne	Polytec	D & R Hendersons	Borgs (Parbury)	Melteca	EGR
	21x1 mm	23x1 mm	22x2 mm	29x2 mm	38x1 mm	38x2 mm	42x2 mm									
DC4Z3823							D	Peruvian Clay DG Gloss	Peruvian Clay DG Gloss							
DC513Z	O		D					Pesto Linea	Pesto Linea							
DM735Z			O	O		O		Pesto Linea	Pesto Linea							
DC69Z923	D							Pesto Linea Gloss	Pesto Linea Gloss							
DCZ59623	5							Pesto Linea Silk	Pesto Linea Silk							
DC65Z723	D							Pillarbox Gloss	Pillarbox Gloss							
DCZ274	O		O					Pillarbox Nuance	Pillarbox Nuance							
DC813P			D					Pixel Abyss		Pixel Abyss						
DC815P	D		D					Pixel Tabac		Pixel Tabac						
DC991L	D							Planked Apple		Planked Apple			Apple Tree			
DM210S			D	D		D		Planked Apple		Planked Apple	Planked Apple		Apple Tree			
DC431Z	S		D	D				Planked Pear		Planked Pear			Cherry			
DM711Z			C	C		D		Planked Pear		Planked Pear	Planked Pear		Cherry			
DC501P	D							Platane Tabac		Platane Tabac						
DM120T			D					Platane Tabac		Platane Tabac						
DC663Z			D					Platinum Lustre	Platinum Lustre							
DC479Z	O		O	S		O		Platinum Micro	Platinum Micro							
DCZ13523	5							Platinum Micro Gloss	Platinum Micro Gloss							
DC00J423	5	5						Polar White Gloss	Polar White Gloss	Snowdrift Gloss	Alpine White Gloss					
DCZ239	O		O	D		D		Polar White Nuance	Polar White Nuance							
DCZ298	O		O	O				Polar White Riven	Polar White Riven							
DCZ39623	5					5		Polar White Sheen (BG)			Accent White Gloss	Polar White Sheen				
DC626K	O							Poplar	Poplar				White Poplar			
DM504S			C	O				Poplar	Poplar				Sycamore			
DC4Z6723	5		5					Porcelain Sheen				Porcelain Sheen				
DCZ673	O							Posie Nuance	Posie Nuance							
DC47Z3	O							Prestige Walnut		Prestige Walnut						
DM803Z			O	O		O		Prestige Walnut		Prestige Walnut						

**Döllken ABS Edgebanding Reference Chart - Surface Print 'DC' Type & Woodgrain Throughout 'DM' Type**

Colour Code	Availability							SURTECO Colour Name	Laminex	Formica	CHH ColourPyne	Polytec	D & R Hendersons	Borgs (Parbury)	Melteca	EGR
	21x1 mm	23x1 mm	22x2 mm	29x2 mm	38x1 mm	38x2 mm	42x2 mm									
DC4Z90	D		D					Provence Wood				Provence Wood				
DC4Z3723							D	Pumice DG Gloss	Pumice DG Gloss							
DCZ58223	5							Pumice Gloss	Pumice Gloss							
DC4Z51	O		O					Pumice Micro				Pumice Micro				
DCZ245	O		O	O				Pumice Nuance	Pumice Nuance							
DCZ297	O							Pumice Riven	Pumice Riven							
DCZ153			D				D	Pure Calcite	Pure Calcite							
DC4Z49	O		D	D				Quarry Micro				Quarry Micro				
DC4Z6523	5		5					Quarry Micro Gloss				Quarry Micro Gloss				
DC219L	O							Radiant Maple		Radiant Maple						
DM652S			O					Radiant Maple		Radiant Maple						
DC7047	C		C	C			C	Red Cherry	Red Cherry		Red Cherry					
DM9231			C	C			C	Red Cherry	Red Cherry		Red Cherry					
DC486Z	O			D				Refined Oak		Refined Oak						
DM728Z			O	O			O	Refined Oak		Refined Oak						
DC4Z2023	5							Refined Oak Gloss		Refined Oak Gloss						
DC652Z	D							Restful Elm			Restful Elm					
DC4Z47	O		O					River Redgum				River Redgum				
DC60Z423			D					River Redgum Sheen / Gloss				River Redgum Sheen / Gloss				
DC4Z79	O		O	D				Rocco Lini				Rocco Lini				
DC4Z6323	5		5					Rocco Lini Sheen				Rocco Lini Sheen				
DC457Z	O		O	O				Rock Maple	Rock Maple							
DM717Z			C	O			S	Rock Maple	Rock Maple							
DCZ281	O		C	C			C	Rock Salt		Rock Salt						
DCZ14423	5							Rock Salt Gloss		Rock Salt Gloss						
DC403Z	O							Royal Integra	Royal Integra							
DCZ635	O							Rural Oak Natural	Rural Oak Natural							
DM880Z			O	O			O	Rural Oak Natural	Rural Oak Natural							

**Döllken ABS Edgebanding Reference Chart - Surface Print 'DC' Type & Woodgrain Throughout 'DM' Type**

Colour Code	Availability							SURTECO Colour Name	Laminex	Formica	CHH ColourPyne	Polytec	D & R Hendersons	Borgs (Parbury)	Melteca	EGR
	21x1 mm	23x1 mm	22x2 mm	29x2 mm	38x1 mm	38x2 mm	42x2 mm									
DCZ636	O							Rural Oak Riven	Rural Oak Riven							
DC781N			D					Sakkara Ivory	Sakkara Ivory							
DCZ602	O		O					Sakkara Ivory	Sakkara Ivory							
DC332J			D					Sakkara Mint	Sakkara Mint			Savannah Mint				
DC53Z545		6						Sand Stylelite GL6								Sand Stylelite
DC8580	O		S	O		O		Sanded Aluminium				Brushed Aluminium	Luxor			
DCZ45523	5							Sandstone Gloss			Sandstone Gloss					
DC4Z82	O							Sandy Birch	Sandy Birch							
DM831Z			O	O				Sandy Birch	Sandy Birch							
DCZ22423	5							Sarsen Grey Gloss	Sarsen Grey Gloss	Mist Grey Gloss						
DCZ462	O		O					Sarum Strand		Sarum Strand						
DC4Z88	O		O					Sassi	Sassi							
DC094X	O							Satin Heartwood	Satin Heartwood		Acacia Grove Velvet					
DM542T			O	D				Satin Heartwood	Satin Heartwood		Acacia Grove Velvet					
DC66Z323	5							Satin Heartwood Gloss	Satin Heartwood Gloss							
DCZ815	O							Satra Wood Ravine			Satra Wood Ravine					
DM261T			D					Sawatake	Sawatake							
DCZ230	O		O					Scribe Natural	Scribe Natural							
DCZ302	O		D					Scribe Riven	Scribe Riven							
DCZ743	O							Seasoned Oak	Seasoned Oak							
DM877Z			O	O		O		Seasoned Oak	Seasoned Oak							
DCZ290	O							Seasoned Oak Riven	Seasoned Oak Riven							
DM861Z			O	O		O		Seasoned Oak Riven	Seasoned Oak Riven							
DC48Z7	O							Seductive Limba	Seductive Limba							
DM807Z			O					Seductive Limba	Seductive Limba							
DC65Z223	5							Seductive Limba Gloss	Seductive Limba Gloss							
DC067M	C		C	C		C		Select Beech	Select Beech		Classic Beech	Premium Beech	Sonova Beech	Bavarian Beech		
DM219T			C	C		S		Select Beech	Select Beech		Classic Beech	Premium Beech	Sonova Beech	Bavarian Beech		



**Döllken ABS Edgebanding Reference Chart - Surface Print 'DC' Type & Woodgrain Throughout 'DM' Type**

Colour Code	Availability							SURTECO Colour Name	Laminex	Formica	CHH ColourPyne	Polytec	D & R Hendersons	Borgs (Parbury)	Melteca	EGR
	21x1 mm	23x1 mm	22x2 mm	29x2 mm	38x1 mm	38x2 mm	42x2 mm									
DCZ569			D	D				Sepia Oak Ravine				Sepia Oak Ravine				
DCZ809	O							Sepia Oak Ravine				Sepia Oak Ravine				
DCZ147			O					Shadowplay	Shadowplay							
DC4Z54	O		O	O				Shannon Oak				Shannon Oak				
DC51Z623	5		5					Shannon Oak Gloss				Shannon Oak Gloss				
DC521Q	O		O	D		D		Sheer Mesh	Sheer Mesh							
DCZ90045		6						Sienna Teak Stylelite GL6								Sienna Teak Stylelite
DC45Z9	O							Silky Maple	Silky Maple							
DM799Z			C	O		C		Silky Maple	Silky Maple							
DC491Z	O							Silver Ash	Silver Ash				Maple Sugar			
DM741Z			S	S		S		Silver Ash	Silver Ash				Maple Sugar			
DCZ13023	5							Silver Ash Gloss	Silver Ash Gloss							
DC687Z	O		O					Silver Haze			Silver Haze					
DC41Z3			D					Silver Lustre	Silver Lustre							
DCZ650	O							Silver Riftwood Natural	Silver Riftwood Natural							
DCZ649	O							Silver Riftwood Nuance	Silver Riftwood Nuance							
DC4Z20	O		D					Silver Shadow		Silver Shadow						
DC832M	O		O	O		O		Silver Strata		Silver Strata						
DCZ14523	5							Silver Strata Gloss		Silver Strata Gloss						
DCZ33045		6						Silver Stylelite GL6								Silver Stylelite
DC69Z2	D							Slalom		Slalom						
DC64Z145		6						Slate Stylelite GL6								Slate Stylelite
DC69Z8	O		O	O		D		Smoke Melange		Smoke Melange						
DCZ461	O		O					Smoke Strand		Smoke Strand						
DCZ62528	O							Smokey Finline Naturale			Smokey Finline Naturale					
DC48Z6	O							Smoky Sapelle	Smoky Sapelle							
DM806Z			O	O		D		Smoky Sapelle	Smoky Sapelle							
DC65Z323	5							Smoky Sapelle Gloss	Smoky Sapelle Gloss							

**Döllken ABS Edgebanding Reference Chart - Surface Print 'DC' Type & Woodgrain Throughout 'DM' Type**

Colour Code	Availability							SURTECO Colour Name	Laminex	Formica	CHH ColourPyne	Polytec	D & R Hendersons	Borgs (Parbury)	Melteca	EGR
	21x1 mm	23x1 mm	22x2 mm	29x2 mm	38x1 mm	38x2 mm	42x2 mm									
DCZ250	O							Smoky Sapelle Nuance	Smoky Sapelle Nuance							
DM849Z				D				Smoky Sapelle Nuance	Smoky Sapelle Nuance							
DC4Z01	O		O	O				Snow Elm		Snow Elm						
DCZ13123	5							Snow Elm Gloss		Snow Elm Gloss						
DC00J423	5							Snowdrift Gloss	Polar White Gloss	Snowdrift Gloss	Alpine White Gloss					
DC58Z223	5		5					Snowgum Gloss				Snowgum Gloss				
DC022U			D					Snowy Beech				Snowy Beech				
DC619N	O							Soft Maple		Soft Maple			Light Pear			
DM381S			C	O				Soft Maple		Soft Maple			Light Pear			
DCZ597	O							Soft Walnut				Soft Walnut				
DCZ59728	O							Soft Walnut Ravine				Soft Walnut Ravine				
DC556Z			D					Sonova Beech					Sonova Beech			
DC541Z	O							South West Jarrah		South West Jarrah			Crown Mahogany			
DM716Z			C	O				South West Jarrah		South West Jarrah			Crown Mahogany			
DCZ313	D		D	D				Sphinx Nuance	Sphinx Nuance							
DM754Z			D					Spring Maple							Spring Maple	
DCZ804	O							Stainless Haze			Stainless Haze					
DC42Z9	D		D					Steel		Steel						
DC437Z	D							Stipple Aquatic	Stipple Aquatic							
DC437Q			D					Stipple Breeze	Stipple Breeze							
DC520Q	O		O	D				Stipple Burnished Plum	Stipple Burnished Plum							
DC438Q				D				Stipple Cocoa	Stipple Cocoa							
DC54Z1	S		C	O				Stipple Cocoa 09	Stipple Cocoa 09							
DC514Q	S		C	O				Stipple Hemp	Stipple Hemp			Linen Micro (deleted)				
DC65Z523	5							Stipple Hemp Gloss	Stipple Hemp Gloss							
DC442Q	D		D					Stipple Lemongrass	Stipple Lemongrass							
DC042W	O		D					Stipple Merlot	Stipple Merlot							
DC441Q	D		D					Stipple Rust	Stipple Rust							

**Döllken ABS Edgebanding Reference Chart - Surface Print 'DC' Type & Woodgrain Throughout 'DM' Type**

Colour Code	Availability							SURTECO Colour Name	Laminex	Formica	CHH ColourPyne	Polytec	D & R Hendersons	Borgs (Parbury)	Melteca	EGR
	21x1 mm	23x1 mm	22x2 mm	29x2 mm	38x1 mm	38x2 mm	42x2 mm									
DC54Z2	S		C	C		C		Stipple Seal 11	Stipple Seal 11							
DC65Z423	5							Stipple Seal Gloss	Stipple Seal Gloss							
DCZ255	O		O	O		O		Stipple Smoke Natural	Stipple Smoke Natural							
DC057J	O		O					Stipple Sulphur	Stipple Sulphur							
DC440Q	D		D					Stipple Sumatra	Stipple Sumatra							
DCZ44123	5							Stone Grey Sheen				Stone Grey Sheen				
DCZ414	O							Straight Grain Wenge		Straight Grain Wenge	Antoga Wenge					
DM872Z			O	O		O		Straight Grain Wenge		Straight Grain Wenge	Antoga Wenge					
DCZ47723	5		5					Strata Grey Sheen				Strata Grey Sheen				
DCZ12923	5							Streetlight Gloss		Streetlight Gloss						
DC64Z5	O							Stringybark	Stringybark							
DM770Z						D		Stringybark	Stringybark							
DM827Z			O			O		Stringybark	Stringybark							
DC626Z	O		O	O				Sublime Teak	Sublime Teak							
DM769Z			O	O		O		Sublime Teak	Sublime Teak							
DCZ305	O							Sublime Teak Riven	Sublime Teak Riven							
DM864Z			O					Sublime Teak Riven	Sublime Teak Riven							
DCZ593	5							Sublime Teak Silk	Sublime Teak Silk							
DM062S			D					Swiss Pear								
DC417Z	D		D					Swiss Pear (L)	Swiss Pear							
DM703Z			D	D				Swiss Pear (L)	Swiss Pear							
DC51Z9	D							Tanganyka	Tanganyka							
DM823Z			D					Tanganyka	Tanganyka							
DC588Q	D		D					Tasman Apple	Tasman Apple							
DM235T			D					Tasman Apple	Tasman Apple							
DCZ45723	5							Tasman Elm Gloss			Tasman Elm Gloss					
DC0L6328	O							Tasman Elm Naturale			Tasman Elm Naturale					
DC0L6300	O							Tasman Elm Velvet			Tasman Elm Velvet					

**Döllken ABS Edgebanding Reference Chart - Surface Print 'DC' Type & Woodgrain Throughout 'DM' Type**

Colour Code	Availability							SURTECO Colour Name	Laminex	Formica	CHH ColourPyne	Polytec	D & R Hendersons	Borgs (Parbury)	Melteca	EGR
	21x1 mm	23x1 mm	22x2 mm	29x2 mm	38x1 mm	38x2 mm	42x2 mm									
DC449L	O							Tasmanian Ash		Tasmanian Ash			Australian Ash			
DM434S			O	O			S	Tasmanian Ash		Tasmanian Ash			Australian Ash			
DC48Z5	O							Tawny Linewood	Tawny Linewood							
DM805Z			O	O			O	Tawny Linewood	Tawny Linewood							
DC66Z423	5							Tawny Linewood Gloss	Tawny Linewood Gloss							
DCZ247	O							Tawny Linewood Nuance	Tawny Linewood Nuance							
DM846Z			O	O			O	Tawny Linewood Nuance	Tawny Linewood Nuance							
DCZ447	O							Tessuto Milan				Tessuto Milan				
DCZ44728	O							Tessuto Milan Ravine				Tessuto Milan Ravine				
DCZ89945		6						Tierra Elm Stylelite GL6								Tierra Elm Stylelite
DC691J			D					Toffee		Toffee						
DC243U			D					Translucent Green		Translucent Green						
DC0L6223	5							Treble Beech Gloss			Treble Beech Gloss					
DCZ62428	O							Treble Beech Naturale			Treble Beech Naturale					
DC0L61	O							Treble Beech Velvet			Treble Beech Velvet					
DC044W	D							Tribal Palm	Tribal Palm							
DM539T			D	D			D	Tribal Palm	Tribal Palm							
DC4Z77	O		O	D				Truffle Lini				Truffle Lini				
DC4Z5723	5		5					Truffle Lini Gloss				Truffle Lini Gloss				
DC4Z55	D		D					Tulip Spruce				Tulip Spruce				
DCZ151			O					Tunisian Stone	Tunisian Stone							
DC095X	D							Tuscan Pear	Tuscan Pear							
DC54Z023	D							Twine Gloss	Twine Gloss							
DCZ28223	5		5					Ultra White Gloss				Ultra White Gloss				
DC47Z4	O							Urban Wood		Urban Wood						
DM804Z			O	O			O	Urban Wood		Urban Wood						
DCZ14323	5							Urban Wood Gloss		Urban Wood Gloss						
DC41Z7				D				Vanilla Oak					Vanilla Oak			

**Döllken ABS Edgebanding Reference Chart - Surface Print 'DC' Type & Woodgrain Throughout 'DM' Type**

Colour Code	Availability							SURTECO Colour Name	Laminex	Formica	CHH ColourPyne	Polytec	D & R Hendersons	Borgs (Parbury)	Melteca	EGR
	21x1 mm	23x1 mm	22x2 mm	29x2 mm	38x1 mm	38x2 mm	42x2 mm									
DC504Z	O							Vicenza Walnut		Vicenza Walnut						
DM729Z			S				D	Vicenza Walnut		Vicenza Walnut						
DC4Z1723	5							Vicenza Walnut Gloss		Vicenza Walnut Gloss						
DC518Q				D			D	Vicuna Storm	Vicuna Storm							
DM352T			D					Walnut							Walnut	
DC4Z68	O		O					Warrego Pear				Warrego Pear				
DCZ35723	5							Washboard Gloss	Washboard Gloss							
DCZ231	O							Washboard Natural	Washboard Natural							
DM841Z			O					Washboard Natural	Washboard Natural							
DCZ642	O							Washed Knotty Ash Natural	Washed Knotty Ash Natural							
DC146U	O							Waxed Oak	Waxed Oak							
DM232T			S	D				Waxed Oak	Waxed Oak							
DC629M	O		D					Wenge (H)				Wenge	Wenge Arrow			
DCZ325	S		C	O				Wenge (L)	Wenge							
DM216T							D	Wenge (L)	Wenge	Straight Grain Wenge						
DM870Z			C	O			O	Wenge (L)	Wenge							
DM9081			D					White Beech								
DC51Z223	5		5	5			5	White Gloss	Trade White Gloss	Warm White Gloss	White Gloss		Designer White Gloss			
DC541H23	5							White Gloss (L)	White Gloss							
DCZ44623	5							White Mist Sheen				White Mist Sheen				
DCZ236	O		O	O				White Nuance	White Nuance							
DCZ293	O		O	O				White Riven	White Riven							
DCZ259	O		C					White Silver		White Silver						
DC470Z			D					White Wave		White Wave						
DCZ655	O							White Textile Natural	White Textile Natural							
DCZ34545		6						Whitehaven Stylelite GL6								Whitehaven Stylelite
DCZ233	O							Whitewashed Oak Natural	Whitewashed Oak Natural							
DM842Z			O					Whitewashed Oak Natural	Whitewashed Oak Natural							

**Döllken ABS Edgebanding Reference Chart - Surface Print 'DC' Type & Woodgrain Throughout 'DM' Type**

Colour Code	Availability							SURTECO Colour Name	Laminex	Formica	CHH ColourPyne	Polytec	D & R Hendersons	Borgs (Parbury)	Melteca	EGR
	21x1 mm	23x1 mm	22x2 mm	29x2 mm	38x1 mm	38x2 mm	42x2 mm									
DCZ307	O							Whitewashed Oak Riven	Whitewashed Oak Riven							
DM865Z			O					Whitewashed Oak Riven	Whitewashed Oak Riven							
DCZ574	O							Whitewood			Whitewood					
DCZ57428	O							Whitewood Naturale			Whitewood Naturale					
DC481Z	S		O	O				Wild Birch	Wild Birch							
DM737Z			S	S		S		Wild Birch	Wild Birch							
DC498Z			D					Yarra Pear				Yarra Pear				
DC576Q	C		C	C		C		Young Beech	Young Beech		Soft Lemon	Colo Maple	Young Birch/ Silver Maple/ Tea Tree			
DM237T			C	C		C		Young Beech	Young Beech		Soft Lemon	Colo Maple	Young Birch / Silver Maple / Tea Tree			
DC557Z			D	D				Zebrano					Zebrano			
DC4Z61			D	D				Zinc Alloy				Zinc Alloy				
DCZ519	O		S	O		O		Zincworks	Zincworks							
DCZ306	O		O	D		D		Zincworks Riven	Zincworks Riven							
DCZ59423	5							Zincworks Silk	Zincworks Silk							

ABS 'DC' & 'DM' colours - non-binding colour recommendation

C=Commodity Range S=Standard Range O=Option Range 4=Gloss 4 Range 5=Gloss 5 Range 6=Gloss 6 Range D=will become off-range when stocks are depleted

## Thin Thermoplastic Edgebanding Reference Chart - 0.4mm Thermoplastic

Colour Code	Availability				Bulk	SURTECO Colour Name	Laminex	Formica	CHH ColourPyne	Polytec	D & R Hendersons	Borgs (Parbury)	Melteca
	21mm	30mm	40mm	other									
SF015Z	D					Antique Wiluna White		Antique Wiluna White	Antique White	Antique	Antique Cream		New Cream
BLAEBO	D					Black Ebony							
SF011010	X					Black Stipple	Black	Black	Black	Black	Black Satin	Black	New Black
SF004Z	D					Folkstone Grey Satin	Oyster Grey	Seal Grey	Folkstone		Florentine Grey	Fashion Grey / Oyster Grey	New Dove Grey
P6926	D					Sydney Beech							
SFK501	X					White Stipple							
SF318Z	X					White Satin							
SF318Z10	D					White Stipple							
SF6248	D					White Satin							
SF624810	D					White Stipple							

0.4mm Thin Thermoplastic non-binding colour recommendation

X=stocked sizes D=will become off-range when stocks are depleted.

## BauschLinnemann Melamine Edgebanding Reference Chart - 21mm Solid Colours

Colour Code	SURTECO Colour Name	Colour Category	Availability O/C/SRT	To Be Deleted	Laminex	F1 Range Formica	CHH ColourPyne	Polytec	D & R Henderson	Borgs (Parbury)	Laminex - NZ Melteca	Laminex - Aust. Melteca
79133	Alabaster (L)	Pastel Solid Colour	O		Alabaster			Alabaster				
10794	Almond (Stipple)	Pastel Solid Colour	O			Almond				Natural Almond	New Pacific Almond	New Pacific Almond
24084	Almond Sand	Pastel Solid Colour	C	*	Parchment	Gentle Beige / Oatmeal	Almond Sand		Porcelain			
10029	Anthracite (Stipple)	Intense Solid Colour	O				Anthracite		Anthracite			
24598A	Antique White Ash	Pastel Solid Colour	O	*				Antique White Ash				
2459820	Antique White Gloss	Pastel Solid Colour	O					Antique White Gloss				
2459843	Antique Willuna White (Stipple)	Pastel Solid Colour	C			Antique Willuna White	Antique White	Antique White	Antique Cream		Cream	New Cream
10788	Ash White (Stipple)	Pastel Solid Colour	O			Ash White						
B2648	Asphalt (Stipple)	Intense Solid Colour	O	*		Asphalt						
19840	Aurum Velvet	Intense Solid Colour	O									
10503	Bahama Blue (Stp)	Intense Solid Colour	O		Steel Blue	Bahama Blue	Noosa Blue		Teal Blue		Mistral Blue	New Mistral Blue
B1773	Biscotti	Pastel Solid Colour	O	*		Biscotti						
1009051	Black Ash Woodgrain	Intense Solid Colour	O					Black Ash Woodgrain	Black Ash Woodgrain			
10090	Black Satin	Black Solid Colour	C		Black Satin	Black Satin	Black Satin	Black Satin	Black Satin	Black Satin	Black Satin	New Black Satin
1009043	Black Stipple	Black Solid Colour	C		Black Stipple	Black Stipple	Black Stipple	Black Stipple	Black Stipple	Black Stipple	Black Stipple	New Black Stipple
24357	Brittany Blue	Intense Solid Colour	SRT						Provence Blue	Brittany Blue		
10040	Bronx Beige	Pastel Solid Colour	O			Bronx Beige	Bronx Beige				Champagne	
10792	Cappuccino	Intense Solid Colour	O			Cappuccino						
10046	Chamois Beige	Pastel Solid Colour	O			Chamois Beige						
B1023	Champagne (BG)	Pastel Solid Colour	O	*				Champagne				
24291	Champagne (F)	Pastel Solid Colour	O			Champagne						New Seashell
10504	Char Blue	Intense Solid Colour	O			Char Blue	Pacific		Char Blue			
10515	Charcoal Grey	Intense Solid Colour	O			Storm	Storm Grey		Storm Grey		Charcoal Grey	New Charcoal Grey



## BauschLinnemann Melamine Edgbanding Reference Chart - 21mm Solid Colours

Colour Code	SURTECO Colour Name	Colour Category	Availability O/C/SRT	To Be Deleted	Laminex	F1 Range Formica	CHH ColourPyne	Polytec	D & R Henderson	Borgs (Parbury)	Laminex - NZ Melteca	Laminex - Aust. Melteca
16527	Concrete Haze	Pastel Solid Colour	SRT	*								
B1722	Coral	Pastel Solid Colour	O	*				Coral				
24598	Cream	Pastel Solid Colour	O			Antique Willuna White	Antique White	Antique White	Antique Cream		Cream	New Cream
10803	Deep Anthracite	Intense Solid Colour	O			Deep Anthracite						
79373	Designer White	Pastel Solid Colour	C		Polar White	Snowdrift	Accent White	Designer White	Sheer White	Designer White	Designer White	New Designer White
24597	Dove Grey	Pastel Solid Colour	C	*	Oyster Grey	Seal Grey	Folkstone		Florentine Grey		Dove Grey	New Dove Grey
B79375	Fashion Grey	Pastel Solid Colour	O					Oyster Grey		Fashion Grey		
10791	Flax	Pastel Solid Colour	O		Flax					White Sand	New Vanilla	New Vanilla
B10711	Fleece / Cloud White	Pastel Solid Colour	O							Fleece / Cloud White		
83761	Folkstone / Seal Grey	Pastel Solid Colour	O		Oyster Grey	Seal Grey	Folkstone		Florentine Grey		Dove Grey	New Dove Grey
24597	Folkstone Grey	Pastel Solid Colour	C	*	Oyster Grey	Seal Grey	Folkstone		Florentine Grey		Dove Grey	New Dove Grey
24012	Frosty White	Pastel Solid Colour	C		White	Warm White				Frosty White		New Classic White
24084	Gentle Beige	Pastel Solid Colour	C	*	Parchment	Gentle Beige / Oatmeal	Almond Sand		Porcelain			
10041	Icelandic Blue	Pastel Solid Colour	O	*		Icelandic Blue						
24196	Indian Sage	Pastel Solid Colour	O		Aloe Vera	Indian Sage	Sage	Sage	Saga Green	Sage	Moss	New Moss
24527	Ivory Cream	Pastel Solid Colour	O	*	Marl Beige	Ivory Cream			Light Yellow			New Champagne
24261	Light / Delux Beige	Pastel Solid Colour	C	*	Classic Beige / Twine	Delux Beige	Chintz	Light Beige	Pearl	Light Beige	Seashell	
10571	Mandarin	Intense Solid Colour	O								Mandarin	
10804	Mist Grey	Pastel Solid Colour	O	*	Sarsen Grey	Mist Grey	Mist Grey	Silver Grey	Saxon Grey	Soft Grey		
10503	Mistral Blue	Intense Solid Colour	O		Steel Blue	Bahama Blue	Noosa Blue		Teal Blue		Mistral Blue	New Mistral Blue
24196	Moss	Pastel Solid Colour	O		Aloe Vera	Indian Sage	Sage	Sage	Saga Green	Sage	Moss	New Moss
24418	New Antique White (BG)	Pastel Solid Colour	C	*				Antique Texture	True Antique White	Antique White		
79623	New Antique White (BG)	Pastel Solid Colour	C					Antique Texture	True Antique White	Antique White		

## BauschLinnemann Melamine Edgebanding Reference Chart - 21mm Solid Colours

Colour Code	SURTECO Colour Name	Colour Category	Availability O/C/SRT	To Be Deleted	Laminex	F1 Range Formica	CHH ColourPyne	Polytec	D & R Henderson	Borgs (Parbury)	Laminex - NZ Melteca	Laminex- Aust. Melteca
79159	New Antique White (L)	Pastel Solid Colour	C	*	New Antique White			Vanilla				
24598	New Cream	Pastel Solid Colour	O			Antique Willuna White	Antique White	Antique White	Antique Cream		Cream	New Cream
19825	New Graphite	Pastel Solid Colour	O	*	New Graphite							
24291	New Sea Shell	Pastel Solid Colour	O			Champagne						New Seashell
24181	Oatmeal	Pastel Solid Colour	C									
10529	Oyster	Pastel Solid Colour	C				Sandstone		Oyster		Oyster	Oyster
10634	Pacific Almond	Pastel Solid Colour	O	*			Mellow Crème				Pacific Almond	
83105	Paperbark	Pastel Solid Colour	O	*	Paperbark							
10564	Peacock	Intense Solid Colour	O	*	Deep Sea						Peacock	
10787	Peruvian Clay	Pastel Solid Colour	O		Peruvian Clay							
11795	Prairie Beige	Pastel Solid Colour	C			Prairie Beige						
10622	Premium White Stipple	Pastel Solid Colour	C									
24357	Provence Blue	Intense Solid Colour	SRT						Provence Blue	Brittany Blue		
10790	Raw Linen	Pastel Solid Colour	O		Raw Linen							
B79659	Rose Bisque	Pastel Solid Colour	O	*								
83104	Sable	Pastel Solid Colour	O			Sable						
24196	Sage	Pastel Solid Colour	O		Aloe Vera	Indian Sage	Sage	Sage	Saga Green	Sage	Moss	New Moss
24642	Sandstone	Pastel Solid Colour	O			Sandstone						
10804	Sarsen Grey	Pastel Solid Colour	O	*	Sarsen Grey	Mist Grey	Mist Grey	Silver Grey	Saxon Grey	Soft Grey		
24597	Seal Grey	Pastel Solid Colour	C	*	Oyster Grey	Seal Grey	Folkstone		Florentine Grey		Dove Grey	New Dove Grey
10804	Soft Grey	Pastel Solid Colour	O	*	Sarsen Grey	Mist Grey	Mist Grey	Silver Grey	Saxon Grey	Soft Grey		
10789	Stone Beige	Pastel Solid Colour	O		Stone Beige					Beige		
10515	Storm	Intense Solid Colour	O			Storm	Storm Grey		Storm Grey		Charcoal Grey	New Charcoal Grey

## BauschLinnemann Melamine Edgebanding Reference Chart - 21mm Solid Colours

Colour Code	SURTECO Colour Name	Colour Category	Availability O/C/SRT	To Be Deleted	Laminex	F1 Range Formica	CHH ColourPyne	Polytec	D & R Henderson	Borgs (Parbury)	Laminex - NZ Melteca	Laminex - Aust. Melteca
24520	Streetlight	Pastel Solid Colour	O	*	Moleskin	Streetlight						
10566	Vanilla	Pastel Solid Colour	O		Vanilla						Vanilla	
83106	Velveteen	Pastel Solid Colour	O			Velveteen						
24012	Warm White	Pastel Solid Colour	C		White	Warm White				Frosty White		New Classic White
B1754	White Ash	White Solid Colour	O	*								
2422020	White Gloss	White Solid Colour	O					White Gloss	Gloss White			
2422051	White Gloss Ash Woodgrain	White Solid Colour	C					White Gloss Ash Woodgrain	Gloss White Ash Woodgrain			
10136	White Satin	White Solid Colour	C		White Satin		White Satin		White Satin	White Satin	Classic White Satin	White Satin
1013643	White Stipple	White Solid Colour	C		White Stipple		White Stipple		White Stipple	White Stipple	Classic White Stipple	White Stipple

## BauschLinnemann Melamine Edgebanding Reference Chart - 21mm Tecoline Woodgrains

Colour Code	SURTECO Colour Name	Colour Category	Availability O/C/SRT	To Be Deleted	Laminex	F1 Range Formica	CHH ColourPyne	Polytec	D & R Henderson	Borgs (Parbury)	Laminex - NZ Melteca	Laminex-Aust. Melteca
18074	American Oak	Woodgrain Print	O									
17154	Australian Oak	Woodgrain Print	O	*					Natural White Oak		Australian Oak	Australian Oak
13777	Baltic Pine	Woodgrain Print	O			Baltic Pine	Baltic Pine		Baltic Pine			
19831	Barcelona Cherry	Woodgrain Print	O			Barcelona Cherry						
18618	Bavarian Beech	Woodgrain Print	O		Select Beech			Clarence Beech		Bavarian Beech		
14269	Blackwood	Woodgrain Print	O	*		Blackwood			Blackbean			
MPA250	Brushed Aluminium - Metal	Melaplast	Special									
MPA256	Brushed Stainless Steel - Metal	Melaplast	Special									
16560	Charred Oak	Woodgrain Print	SRT	*			Charred Oak					
B6446	Cherry	Woodgrain Print	O	*								
14794	Chocolate Pear	Woodgrain Print	O	*		Chocolate Pear		Barron Alder				
16557	Cinnamon Crumble	Woodgrain Print	SRT				Cinnamon Crumble					
18618	Classic Beech	Woodgrain Print	O		Select Beech			Clarence Beech		Bavarian Beech		
19834	Classic Cherry	Woodgrain Print	O			Classic Cherry						
12123	Colonial Pine	Woodgrain Print	O									
19830	Curly Birch	Woodgrain Print	O		Curly Birch				Rotary Birch			
B531K	Daintree Alder	Woodgrain Print	O	*				Daintree Alder				
19828	Dansk Maple	Woodgrain Print	O		Dansk Maple							
14844	Dark Beech	Woodgrain Print	C									
14866	Dark Oak	Woodgrain Print	O								Dark Oak	
B554G	Devonport Apple	Woodgrain Print	O							Devonport Apple		

## BauschLinnemann Melamine Edgebanding Reference Chart - 21mm Tecoline Woodgrains

Colour Code	SURTECO Colour Name	Colour Category	Availability O/C/SRT	To Be Deleted	Laminex	F1 Range Formica	CHH ColourPyne	Polytec	D & R Henderson	Borgs (Parbury)	Laminex - NZ Melteca	Laminex-Aust. Melteca
17668	Euro Beech	Woodgrain Print	O	*		Euro Beech						
B525K	Fitzroy Maple	Woodgrain Print	O					Fitzroy Maple				
80225	Fusion Maple	Woodgrain Print	O					Murray Birch		Fusion Maple		
18698	Golden Beech	Woodgrain Print	C	*		Golden Beech			Bonde Beech		Golden Beech	New Golden Beech
18478	Golden Beech	Woodgrain Print	C	*		Golden Beech			Bonde Beech		Golden Beech	New Golden Beech
57397	Golden Beech	Woodgrain Print	C			Golden Beech			Bonde Beech		Golden Beech	New Golden Beech
13939	Golden Beech (D)	Woodgrain Print	O	*		Golden Beech					Golden Beech	New Golden Beech
14168	Indian Teak	Woodgrain Print	O				Burma Teak		Bronze Teak		Indian Teak	Indian Teak
14593	Ironstone	Woodgrain Print	O		Greystone	Ironstone	Lodestone				Ironstone	
13232	Jarrah	Woodgrain Print	O			Jarrah	Jarrah					New Mahogany
14622	Lemon Tree	Woodgrain Print	C			Lemon Tree	Soft Lemon		Silver Maple			
19822	Licorice Linea	Woodgrain Print	O		Licorice Linea							
12907	Mahogany	Woodgrain Print	O	*								
19197	Manitoba Maple	Woodgrain Print	O						Tea Tree	Manitoba Maple		
13167	Manjimup Jarrah	Woodgrain Print	O		Echelon Redwood				Jarrah	Manjimup Jarrah		
19826	Milano Walnut	Woodgrain Print	O		Milano Walnut							
19824	Milkwood	Woodgrain Print	O		Milkwood							
19838	Mocha Ash	Woodgrain Print	O	*	Mocha Ash							
16558	Myanmar Teak	Woodgrain Print	SRT				Myanmar Teak					
13232	New Mahogany	Woodgrain Print	O			Jarrah	Jarrah					New Mahogany
B547L	New Stainless Steel	Woodgrain Print	O			New Stainless Steel						

## BauschLinnemann Melamine Edgebanding Reference Chart - 21mm Tecoline Woodgrains

Colour Code	SURTECO Colour Name	Colour Category	Availability O/C/SRT	To Be Deleted	Laminex	F1 Range Formica	CHH ColourPyne	Polytec	D & R Henderson	Borgs (Parbury)	Laminex - NZ Melteca	Laminex - Aust. Melteca
19835	Nocturne Oak	Woodgrain Print	O		Nocturne Oak							
14588	Nordic Birch	Woodgrain Print	O	*		Paperbark/ Nordic Birch			Bubinga Bark			
14899	NZ Rimu	Woodgrain Print	O	*							NZ Rimu	
14819	NZ Tawa	Woodgrain Print	O				Best Tawa				NZ Tawa	NZ Tawa
19651	Oyster Linea	Woodgrain Print	O	*	Oyster Linea							
19827	Pesto Linea	Woodgrain Print	O		Pesto Linea							
17251	Planked Apple	Woodgrain Print	O			Planked Apple	Planked Apple		Apple Tree			
17249	Planked Pear	Woodgrain Print	C	*		Planked Pear	Planked Pear	Hunter Cherry	Cherry			
16576	Restful Elm	Woodgrain Print	SRT	*								
19837	Rock Maple	Woodgrain Print	SRT		Rock Maple							
19652	Rock Salt	Woodgrain Print	O			Rock Salt						
18618	Select Beech	Woodgrain Print	O		Select Beech			Clarence Beech		Bavarian Beech		
19823	Silky Maple	Woodgrain Print	O		Silky Maple				Rotary Birch			
19833	Silver Ash	Woodgrain Print	O		Silver Ash							
B521K	Snowy Beech	Woodgrain Print	O					Snowy Beech				
17166	Soft Maple	Woodgrain Print	O			Soft Maple	Crossfire Maple		Sliced Maple			
14579	Spring Maple	Woodgrain Print	O	*	Curly Birch / Young Beech				Light Pear		Spring Maple	Spring Maple
14468	Stainless Steel	Woodgrain Print	O			Stainless Steel						
B547L	Stainless Steel	Woodgrain Print	O	*		New Stainless Steel						
18436	Staufen Eiche	Woodgrain Print	O									
19662	Stipple Cocoa	Woodgrain Print	O		Stipple Cocoa							

## BauschLinnemann Melamine Edgebanding Reference Chart - 21mm Tecoline Woodgrains

Colour Code	SURTECO Colour Name	Colour Category	Availability O/C/SRT	To Be Deleted	Laminex	F1 Range Formica	CHH ColourPyne	Polytec	D & R Henderson	Borgs (Parbury)	Laminex - NZ Melteca	Laminex-Aust. Melteca
19661	Stipple Hemp	Woodgrain Print	O		Stipple Hemp		Dapple Moss					
19653	Stipple Seal	Woodgrain Print	O		Stipple Seal							
B526K	Swan Maple	Woodgrain Print	O					Swan Maple				
16551	Sycamore	Woodgrain Print	SRT						Sycamore			
14210	Tamar Ash	Woodgrain Print	O	*		Tasmanian / Tamar Ash			Australian Ash			
19786	Tanganika	Woodgrain Print	C									
14210	TasmanianAsh	Woodgrain Print	O	*		Tasmanian / Tamar Ash			Australian Ash			
19832	Tuscan Pear	Woodgrain Print	O		Tuscan Pear							
13941	Varona	Woodgrain Print	O	*		Varona						
16467	Vicenza Walnut	Woodgrain Print	O			Vicenza Walnut						
13167	Warm Mahogany	Woodgrain Print	O		Echelon Redwood				Jarrah	Manjimup Jarrah		
14589	White Plum	Woodgrain Print	O		Dansk Maple	White Plum						
19836	Wild Birch	Woodgrain Print	O		Wild Birch							
19839	Young Beech	Woodgrain Print	O		Young Beech		Soft Lemon		Young Birch			
16530	Zebrano	Woodgrain Print	SRT	*								

## Döllken Acrylic Edgebanding Reference Chart

<i>Contrasting "3D Acrylic"</i>							
Colour Code	Finish	Availability					SURTECO Colour Name
		23x1mm	23x2mm	33x2mm	38x2mm	43x2mm	
DC108R	STANDARD		D				Aluwave
DC297R	STANDARD		X			X	Aluwave Optik
DC015R	STANDARD					D	Black
DC065R	STANDARD					D	Black Granite
DC143R	STANDARD		D			D	Blockboard Metal-line
DC707R	STANDARD	D					Bronze
DC588R	STANDARD	X	X	X	X	X	Brushed Aluminium
DC41R8	HIGH GLOSS	X	X			X	Brushed Aluminium HI GLOSS
DC44R3	HIGH GLOSS	X					Brushed Steel HI GLOSS
DC80R0	HIGH GLOSS					X	Carrera Marble GLOSS *
DC077R	STANDARD		X	X		X	Dark Plywood
DC0R35	HIGH GLOSS					X	Ebony Marble GLOSS *
DC207R	STANDARD		D		D		Iridescent Blue
DC208R	STANDARD		D				Iridescent Violet
DC721R	STANDARD		D			X	Matrix
DC343R	STANDARD		D				Mint Green Ice
DC001R	STANDARD		X	X		X	Multiplex
DC020R	STANDARD			D		D	Multiplex ALU
DC103R	STANDARD		D				Multiplex Alu-walnut
DC472R	STANDARD		D				Pearwood Cognac
SF914D	STANDARD					D	Polar White *
DC0R64	HIGH GLOSS					X	Polar White GLOSS *
DC0R36	HIGH GLOSS					X	Pure Mineralstone GLOSS *
DC930R	STANDARD					D	Roman Marble
DC142R	STANDARD		X	X		X	Stainless
DC0R34	HIGH GLOSS					X	Tunisian Stone GLOSS *
DC247R	STANDARD		D			D	Wenge Alu
DC0R33	HIGH GLOSS					X	White Valencia GLOSS *
DC344R	STANDARD		D				Yellow Ice
* 15m roll length these decors only							



<i>"Two-in-One"</i>							
Colour Code	Finish	Availability					SURTECO Colour Name
		23x1.3mm	23x2mm	33x2mm	38x2mm	43x2mm	
DC19R6	HIGH GLOSS	X				X	Black (HG) / Brushed Steel
DC18R5	HIGH GLOSS	D					Blue (HG) / Brushed Steel
DC24R7	HIGH GLOSS	X					Bone (HG) / Brushed Steel
DC42R7	HIGH GLOSS	D					Brut (HG) / Brushed Steel
DC25R1	HIGH GLOSS	X					Claret (HG) / Brushed Steel
DC24R8	HIGH GLOSS	D					Cream (HG) / Brushed Steel
DC40R3	HIGH GLOSS	X					Graphite (HG) / Brushed Steel
DC19R9	HIGH GLOSS	X					Red (HG) / Brushed Steel
DC24R9	HIGH GLOSS	X					Sand (HG) / Brushed Steel
DC11R3	STANDARD	D					Stainless / Glass
DC25R3	HIGH GLOSS	X					Violet (HG) / Brushed Steel
DC38R8	HIGH GLOSS	D					Walnut (HG) / Brushed Steel
DC19R8	HIGH GLOSS	X					White (HG) / Brushed Steel
<i>"Three-in-One"</i>							
Colour Code	Finish	Availability					SURTECO Colour Name
		23x1mm	23x2mm	33x2mm	38x2mm	43x2mm	
DD0R91	HIGH GLOSS	X					Black Gloss / Alu
DC0R73	HIGH GLOSS	X					Mint / White Gloss
DC0R89	HIGH GLOSS	X					White Gloss / Alu

- NOTES:**
1. Standard roll length for all sizes is 50m per roll
  2. Other varieties are available against order - minimum order quantities, specially quoted prices and lead times would apply.
  3. Preglued edgbanding is glued to order - please allow extra 2-4 days for gluing.
  4. All prices and quotations are subject to SURTECO Australia Pty. Ltd. Terms and Conditions of sale.

## ***Döllken Acrylic Edgebanding Reference Chart - "3D-SPACE"***

### ***"3D SPACE LAMELLA"***

Colour Code	Finish	Availability	SURTECO Colour Name
		43 x 1.8mm	
DC3R00	Hi Gloss	X	White / Black HG
DC2R59	Hi Gloss	X	White / Blue HG

### ***"3D SPACE WAVE"***

Colour Code	Finish	Availability	SURTECO Colour Name
		43 x 1.5mm	
DC2R78	Hi Gloss	X	Bronze HG
DC2R79	Hi Gloss	X	Silver HG
DC2R76	Hi Gloss	X	Stainless HG
DC2R77	Hi Gloss	X	Titan HG

**NOTES:**

1. All decors available in 15m or 75m rolls.
2. Other varieties are available against order - minimum order quantities, specially quoted prices and lead times would apply.
3. Preglued edgebanding is glued to order - please allow extra 2-4 days for gluing.
4. All prices and quotations are subject to SURTECO Australia Pty. Ltd. Terms and Conditions of Sale.

## Veneer Edgebanding Reference Chart - "Flexiwood" 2mm Thick Veneer

Species	Availability					
	22x2 mm		29x2 mm		38x2 mm	
	unglued	preglued	unglued	preglued	unglued	preglued
American Cherry	X	glued to order	X	glued to order	X	glued to order
American (White) Oak	X	glued to order	X	glued to order	X	glued to order
American Walnut	X	glued to order	X	glued to order	X	glued to order
Anigre (light colour)	X	glued to order	X	glued to order	X	glued to order
Blackbutt	X	glued to order				
Brushbox	X	glued to order	X	glued to order		
Euro Beech (Steamed)	X	glued to order	X	glued to order	X	glued to order
Jarrah	X	glued to order	X	glued to order	X	glued to order
Koto Ash	X	glued to order			X	glued to order
Macore	X	glued to order	D	glued to order	X	glued to order
Multiplex Birch 6792	X	glued to order	X	glued to order	X	glued to order
New Guinea Rosewood	X	glued to order			D	glued to order
Radiata Pine	X	glued to order				
Rock Maple	X	glued to order	X	glued to order	X	glued to order
Sapele Mahogany	X	glued to order	X	glued to order	X	glued to order
Spotted Gum	X	glued to order				
Tasmanian Blackwood	X	glued to order	X	glued to order	X	glued to order
Tasmanian Myrtle	D	glued to order	D	glued to order	D	glued to order
Tasmanian Oak	X	glued to order	X	glued to order	X	glued to order
Victorian Ash	X	glued to order	X	glued to order	X	glued to order
Wenge	X	glued to order				

Note: some species only available until current stock is depleted

D = to be deleted from range when current available stock is depleted

### NOTES:

1. Standard roll length is 100m
2. Other species are available against order - minimum order quantities, specially quoted prices and lead times would apply.
3. Preglued edgebanding is glued to order - please allow extra 2-4 days for gluing.
4. All prices and quotations are subject to SURTECO Australia Pty. Ltd. Terms and Conditions of Sale.

## Veneer Edgebanding Reference Chart - "Flexiwood" 0.5 mm Thin Veneer

Species	Availability					
	22 x 0.5 mm		29 x 0.5 mm		38 x 0.5 mm	
	unglued	preglued	unglued	preglued	unglued	preglued
American Cherry	X	X			X	X
American (White) Oak	X	X	X	glued to order	X	X
American Walnut	X	X	X	X	X	X
Anigre (light colour)	X	X	X	X	X	X
Blackbutt	X	X	D	glued to order		
Brush Box	X	X			D	D
Euro Beech (Steamed)	X	X	X	X	X	glued to order
Jarrah	X	X		D	D	glued to order
Koto Ash	X	X	X	X	X	X
Macore	D	glued to order				
New Guinea Rosewood	X	X	X	X		D
Plantation Oak	X	glued to order	X	glued to order	X	glued to order
Radiata Pine	X	X	X	glued to order	X	X
Rock Maple	X	X	X	X	X	X
Sapele Mahogany	X	X	X	X	X	X
Spotted Gum	X	glued to order	X	glued to order	X	glued to order
Tasmanian Blackwood	X	X	D	glued to order		
Tasmanian Myrtle	X	X			D	glued to order
Tasmanian Oak	X	X	X	X	X	X
Victorian Ash / Tasmanian Ash	X	X	X	glued to order	X	X
Wenge	X	X	X	X	X	X
* Non-stock item						

Note: some species only available until current stock is depleted  
D = to be deleted from range when current available stock is depleted

**NOTES:**

- Standard roll length is 100 m
- Other species are available against order - minimum order quantities, specially quoted prices and lead times would apply.
- All prices and quotations are subject to SURTECO Australia Pty. Ltd. Terms and Conditions of sale.

# general information

## Product versions



### Solid colour (SF)

Rigid ABS edgebanding come in solid colours. The material is uniformly coloured throughout.



### Through-grained (DM)

Rigid ABS edgebanding are printed with a surface and sealed with UV-hardened acrylic varnish. The material is full-dyed in two colours, with the result that a natural real wood grain is visible in the milled edge radius.



### Surface print (DC)

Rigid ABS edgebanding with a printed surface and sealed with UV-hardened acrylic varnish. The material is uniformly through coloured.



### Melamine

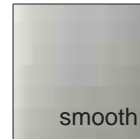
Nonfading, specially-formulated papers impregnated with melamine resins and hardened surface lacquer for extra protection (solid colours, woodgrains and patterns)



### Acrylic-Edgebanding

3D-Acrylic-Edgebanding is made with a special acrylic surface and has the dÉcor, woodgrain or fantasy pattern printed on the back.

## Embossing



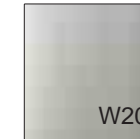
without embossing



W101

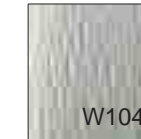


W110

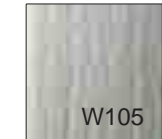


W200

stipple



W104



W105

ash

## Stock Range - Dimensions and Roll Lengths

### ABS

Dimensions	Roll Lengths
21x0.8mm	200m, white
21x1mm	100m
21x1mm	200m, white
22x2mm	100m
29x2mm	100m
38x2mm	100m

### Acrylics

Dimensions	Roll Lengths
23x1mm	150m
23x2mm	75m
33x2mm	50m
38x2mm	50m
43x2mm	50m

### Thin Thermoplastic

Dimensions	Roll Lengths
21x0.4mm	250m, white
21x0.4mm	300m, decors
21x0.45mm	250m, white&decors

### Flexiwood Thick Veneer

Dimensions	Roll Lengths
22x2.1mm	100m unglued & preglued
29x2.1mm	100m unglued & preglued
38x2.1mm	100m unglued & preglued

### Melamine

Dimensions	Roll Lengths
21mm	Random, 100m, unglued
21mm	50m, preglued
21mm	250m, unglued, white
21mm	150m, preglued white

### Flexiwood Thin Veneer

Dimensions	Roll Lengths
22x0.45mm	100m unglued
22x0.45mm	100m preglued

## Important note:

1. The above cross-references are suggested matches only and while offered in good faith, should be used as a guide only. Final decisions regarding the acceptability of colour matches must be made by the individual.
2. Some variation in colour and/or printed patterns may occur between production runs, which is normal. We can therefore accept no liability for any reasonable colour variations.
3. All quotations and product offers are subject to SURTECO AUSTRALIA PTY LIMITED ABN 35092690232 Terms and Conditions of Sale.

# SURTECO AUSTRALIA PTY LIMITED ABN 35 092 690 232 - TERMS AND CONDITIONS OF SALE

1. **INTERPRETATION**  
**In these Terms:**
  - 1.1. "Company" means Surteco Australia Pty Limited ABN 35 092 690 232 and its successors and assigns;
  - 1.2. "Confidential Information" means all the Company's trade secrets, confidential business and technical information, know-how not generally known to the public, customer and supplier lists, pricing policies and costing system data base (whether in electronic or hard copy form).
  - 1.3. "Consequential Loss or Damage" means loss of profits, revenue, use or opportunity, re-installation costs, removal costs and any remote or indirect form of loss or damage;
  - 1.4. "Goods" means all goods sold and/or delivered by the Company to the customer from time to time;
  - 1.5. "GST" means the Goods and Services Tax imposed by A New Tax System (Goods & Services Tax) Act 1999 and any related act and/or regulations;
  - 1.6. "Intellectual Property" means all the Company's Confidential Information, inventions, discoveries and novel designs (whether or not registrable as designs under the Designs Act 1906 or patents under the Patents Act 1952), registered and unregistered trade marks, all copyright works of the Company (including but not limited to all literary and other works as defined in the Copyright Act 1968), all the Company's computer software programs (including source codes and object codes) and all the Company's price lists and manuals (whether in electronic or hard copy form) including technical specifications and product test reports;
  - 1.7. "PPSA" means the Personal Property Securities Act 2009 (Cth);
  - 1.8. "PPSR" means the personal property security register created under the PPSA; and
  - 1.9. "Terms" means these Terms and Conditions of Sale.
2. **APPLICATION**
  - 2.1. These Terms apply to every sale or supply of the Goods.
  - 2.2. No amendment, alteration, waiver or cancellation of any of these Terms is binding on the Company unless confirmed by the Company in writing.
  - 2.3. The customer acknowledges that no employee or agent of the Company has any right to make any representation, warranty or promise in relation of the Goods or the sale of the Goods other than as contained in these Terms.
3. **PRICES**
  - 3.1. Prices are determined by the price list current at the time of order and are subject to change without notice.
  - 3.2. Prices include the cost of packaging, delivery, freight and insurance to the customer's nominated point of collection or delivery only.
4. **TERMS OF PAYMENT**
  - 4.1. Payments are to be made direct to the Company, strictly net, without any deduction or discount other than as stated herein or in the relevant invoice or statement.
  - 4.2. Payments are to be made within thirty (30) days of the date of statement.
  - 4.3. Interest is payable on all overdue accounts calculated on a daily basis at the rate of 2% per month as from the due date for payment until payment is received by the Company.
5. **PROPERTY IN GOODS**

Legal and beneficial ownership of Goods supplied by the Company will not pass to the customer until such time as the goods so supplied and all other goods supplied by the Company to the customer from time to time, have been paid in full in cash or cleared funds.
6. **RISK AND INSURANCE**
  - 6.1. The Goods are entirely at the risk of the customer from the moment the Goods leave the Company's premises even though property in the Goods has not passed to the customer at that time.
  - 6.2. The customer must, at its own expense, maintain the Goods and insure them for the benefit of the Company against theft, breakdown, fire, water and other risks, as from the moment of delivery to the customer and until title in the Goods has passed to the customer. The customer must further take all reasonable measures to ensure that the Company's title to the Goods is in no way prejudiced as a result. If the Goods are lost, destroyed or damaged, any insurance proceeds relating to the Goods in respect of such event received by the Customer, must immediately be paid to the Company.
7. **RE-SALE OF GOODS**
  - 7.1. Should the customer be a re-seller then, subject to clause 7.2.4, the customer has the right to sell the Goods in its own name at full market value and in the ordinary course of business.
  - 7.2. Until the amount payable to the Company in respect of the Goods, and in respect of all other Goods previously supplied by the Company to the customer, has been paid in full in cash or cleared fund:
    - 7.2.1. the customer will hold the Goods only as bailee for the Company;
    - 7.2.2. the Goods must be stored in such manner that they are readily distinguishable from other goods owned by the customer or other persons and so as to clearly show that they are the property of the Company;
    - 7.2.3. the customer must indemnify the Company from and against any claim, action, proceeding, damage, loss, cost, expense or liability incurred or suffered by the Company arising out of the possession, use or disposal of the Goods by the customer or repossession or attempted repossession of them by the Company; and
    - 7.2.4. any sale of the Goods under clause 7.1 will only be effected by the customer as trustee for the Company and the proceeds of such sale and the rights of the Company's customer against its customer arising from such sale will be held on trust for the Company. The said proceeds must be held in a separate account or otherwise clearly identified in the books and records of the customer.
  - 7.3. If the customer resells any Goods then, unless the Goods are clearly identifiable by serial numbers or other distinguishing marks, the customer is deemed to have disposed of the Goods in the chronological order of supply by the Company to the customer (oldest to most recent).
8. **INCORPORATION OF GOODS**
  - 8.1. If the customer uses the Goods in some manufacturing or construction process of its own or some third party, then the customer must hold such part of the moneys received from time to time by the customer for such manufacturing or construction process as relates to the Goods, in trust for the Company.
  - 8.2. The part referred to in clause 8.1 will be deemed to equal in dollar terms to the amount owing by the customer to the Company at the time of the receipt of such moneys by the customer.
  - 8.3. Money received by the customer excludes any debts due but not yet paid by the customer.
  - 8.4. In the circumstances outlined in clause 8.1, the customer must not assign or deal with its debts in any way prior to payment of the moneys receivable by the customer in respect of the Goods prior to their payment to the Company.
9. **DEFAULT**  
**IF:**
  - 9.1. the Goods are not paid for in accordance with these Terms or any other written agreement between the Company and the customer; or
  - 9.2. the Company receives notice of, or reasonably believes that a third party may attempt to levy execution against or attach the Goods; or
  - 9.3. any other event occurs which is likely to adversely affect the customer's ability to pay for the Goods (including but not limited to the appointment of a receiver, receiver and manager, administrator, controller, liquidator, provisional liquidator, trustee or similar person (each an "insolvency representative") to the customer's undertaking),
  - 9.4. then the Company may at any time thereafter, without notice to the customer and without prejudice to any other rights which it may have against the customer, terminate any contract relating to the Goods and the bailment referred to in clause 7.2
10. **RIGHT TO ENTER PREMISES**

In any of the circumstances referred to in the preceding clause, the customer:

  - 10.1. authorises the Company by itself, its agents or representatives at all reasonable times, without notice, to enter onto (with force if reasonably necessary) and at all necessary time(s), to remain in and on any premises where the Goods are located in order to collect the Goods, without being guilty of any manner of trespass; and
  - 10.2. assigns to the Company all the customer's rights to enter onto and remain in and on such premises until all the Goods have been collected.
11. **ADMINISTRATION, RECEIVERSHIP ETC.**

In any of the circumstances referred to in clause 9.3:

  - 11.1. neither the customer nor its insolvency representative or any other person acting for the customer and/or its creditors is entitled to sell, charge, remove, dispose of, use or otherwise deal with the Goods in any way inconsistent with the Company's ownership of the Goods, without the Company's prior written approval;
  - 11.2. the customer, its insolvency representative or any other person acting for or on behalf of the customer and/or its creditors is obliged to re-deliver the Goods to the Company immediately or immediately on his appointment at its or his expense; and
  - 11.3. if the Goods are returned to or collected by the Company, the Company will within 28 days, account to the customer or its legal representative for all moneys received for the Goods from the customer less the Company's reasonable administration charges, expenses incurred and loss of profits involved.
12. **CUSTOMER AS TRUSTEE**

If the customer carries on business as trustee of a trust then the customer warrants that:

  - 12.1. the customer enters into the contract as trustee of a trust;
  - 12.2. the customer has all requisite powers to enter into the contract;
  - 12.3. the beneficiary of the trust approves the purchase of the Goods on the terms of the contract; and
  - 12.4. the assets of the trust are available to the Company in satisfaction of any debt incurred by the customer.
13. **CUSTOMS DUTIES, TARIFFS AND LEVIES**

All applicable customs duties, tariffs and levies are payable by the customer unless the order, order confirmation, invoice or other writing expressly states otherwise.
14. **GOODS & SERVICES TAX**
  - 14.1. Unless expressly stated otherwise in writing, GST is not included in any quoted price.
  - 14.2. If GST is imposed on the Company in respect of the supply of the Goods or any other supply by the Company to the customer, then the customer must pay the amount of such GST to the Company in addition to the quoted price.
  - 14.3. The Company must give the customer written notice of the amount of any GST payable under this clause and provide a tax invoice showing the amount of the GST payable.
15. **DELIVERY**

Availability dates are estimates only, but the Company will use its best endeavours to maintain these estimates.
16. **DELIVERY BY INSTALMENTS**
  - 16.1. The Company reserves the right to deliver the Goods in whole or by instalments, as well as to deliver prior to the date for delivery and in such event the customer must not refuse to take delivery of the Goods.
  - 16.2. Where the Goods are delivered by instalments, each instalment is sold under a separate contract.
  - 16.3. Any failure on the part of the Company to deliver instalments within any specified time does not entitle the customer to repudiate the contract with regard to the balance remaining undelivered.
17. **INSPECTION**

Unless the customer has inspected the Goods and given written notice to the Company within seven (7) days after collection or delivery that the Goods do not comply with the relevant specifications or descriptions, the Goods are deemed to have been accepted in good order and condition.
18. **RETURN OF GOODS**
  - 18.1. No returns will be accepted unless the Company has previously agreed in writing. If the Company agrees to the return of Goods, they must be unsoiled, undamaged and in a resaleable condition (or customer pays for all costs of replacement or repair) and delivered free to the Company's premises unless otherwise agreed by the Company in writing.
  - 18.2. Goods imported especially for the customer or non-standard equipment made to special order cannot under any circumstances be returned and/or credited.
19. **CANCELLATION OF ORDER**

No order may be cancelled, modified or deferred without the prior written consent of the Company (which is at the Company's sole discretion). If such consent is given, it is at the Company's election, subject to the Company being reimbursed all losses, including loss of profits, and paid a cancellation and restocking fee (being not less than 10% of the invoice value of the Goods).
20. **PERSONAL PROPERTY SECURITY**

The customer acknowledges that if the Company has a security interest in the Goods and/or their proceeds for the purposes of the PPSA then the Company may register its security interest in the Goods and their proceeds on the PPSR. The customer also undertakes, at its own expense, to promptly do anything (such as supplying information) which the Company requests and reasonably requires the customer to do for the purposes of ensuring that the security interest is enforceable, perfected or otherwise effective.
21. **COMPANY'S LIABILITY LIMITED**
  - 21.1. The Company is not subject to, and the Customer releases the Company from any liability (including but not limited to Consequential Loss or Damage) arising from any delay in delivery or provision or fault or defect in the Goods and/or the Services. The Customer acknowledges that the Company is not responsible if the Goods and/or Services do not comply with any applicable safety standard(s) or similar regulation(s), and that the Company is not liable for any claim, cost, damage or demand resulting from such non-compliance.
  - 21.2. If, despite clause 15.1, the statutory provisions under the *Competition and Consumer Act 2010* (Cth), the *Sale of Goods Act 1923* (NSW) or any other act or the general law impose on the Company a liability for a defect or fault in the Goods then, to the extent to which the Company is able to do so, the Company's liability under the statutory provisions is limited, at the Company's option, to:
    - 21.2.1. replacement or repair of the Goods or the supply of equivalent Goods; or
    - 21.2.2. payment of the cost of replacing or repairing the Goods or of acquiring equivalent goods, and in either case, the Company will not be liable for any Consequential Loss or Damage or other direct or indirect loss or damage.
  - 21.4. The Customer indemnifies and keeps the Company indemnified from and against all losses, expenses, claims and demands (including but not limited to legal fees and disbursements on a solicitor-client basis), incurred, suffered or made against the Company in connection with:
    - 21.4.1. any conduct by the Company or its employees or agents, or
    - 21.4.2. any representation, description, undertaking, warranty or promise in relation of the Goods and/or the Services, whether express or implied, other than as contained in these Terms,
  - 21.5. unless the Customer has specifically notified the Company in writing before the date of the Agreement of such conduct, representation, description, undertaking, warranty or promise and the Customer's reliance on it.
22. **WARRANTY**
  - 22.1. The Company warrants to the customer that the Goods will be supplied in an undamaged condition.
  - 22.2. On discovery of any defect in the Goods, the customer must immediately notify the Company in writing of such defect. The customer must not carry out any remedial work to alleged defective Goods without first obtaining the written consent of the Company to do so.
  - 22.3. The provisions of any act or law (including but not limited to the *Competition and Consumer Act 2010* (Cth)) implying terms, conditions and warranties, or any other terms, conditions and warranties which might otherwise apply to or arise out of the agreement between the Company and the customer in relation to the Goods (the "Agreement") are hereby expressly negated and excluded to the full extent permitted by law.
  - 22.4. The customer expressly acknowledges and agrees that it has not relied upon, and the Company is not liable for any advice given by the Company, its servants, agents, representatives or employees in relation to the suitability for any purposes of the Goods.
23. **CATALOGUES**

Particulars in leaflets, catalogues, drawings, brochures and other printed material are illustrations only, from no part of the contract between the Company and the customer, and are not binding on the Company.
24. **CONFIDENTIAL INFORMATION & OTHER INTELLECTUAL PROPERTY**
  - 24.1. If any of the Company's Confidential Information and/or other Intellectual Property is supplied to the customer for any purpose whatsoever, then
    - 24.1.1. it remains the sole property of the Company;
    - 24.1.2. the customer acquires no right or interest in or to it other than a non-exclusive, non-assignable licence at no fee to use it solely for the purposes for which it was supplied;
    - 24.1.3. it must not be disclosed by the customer to any other person or company; and
    - 24.1.4. none of it may be used by the customer in any way which might harm or prejudice the interests of the Company.
  - 24.2. The licence referred to in clause 24.1.2 may be terminated immediately by the Company by notice in writing from the Company to the customer at any time, with or without cause.
  - 24.3. If the licence referred to in clause 24.1.2 is terminated then all the Company's Confidential Information and/or Intellectual Property must immediately be returned to the Company at the expense of the customer. In that event, all copies and extracts of the Confidential Information and/or other Intellectual Property, in the customer's possession or control (including in electronic or written form), must also be returned to the Company.
25. **SAMPLES**

Any sample inspected by the customer is solely for the customer's convenience and does not constitute a sale by sample. All samples remain the property of the Company.
26. **SPECIFICATIONS**
  - 26.1. Unless otherwise agreed in writing, the Goods are supplied subject to any specification as to weight, quantity, size, dimensions, finishes, chemical composition and physical properties as may be published generally by the Company or as may be set out in any specification issued by the Company in relation to the Goods, or, if no such specification has been published or set out, subject to such specification as is normally regarded as being commercially acceptable.
  - 26.2. Where any specifications for the Goods are to be supplied by the customer, they must be supplied in a reasonable time to enable the Company to complete delivery by the date for delivery.
27. **CONTRACT**
  - 27.1. The terms of contract between the parties are wholly contained in these Terms and any other writing signed by both parties. The contract is deemed to have been made at the Company's place of business in Sydney and any cause of action is deemed to have arisen there.
  - 27.2. The provisions of the United Nations Convention on contracts for the International Sale of Goods adopted at Vienna, Austria on 10 April 1980 do not apply to any Goods supplied by the Company to the customer.
28. **FORCE MAJEURE**

The Company will not be liable for any breach of contract due to any matter or thing beyond the Company's control (including but not limited to transport stoppages, transport breakdown, fire, flood, earthquake, acts of God, strikes, lock-outs, work stoppages, wars, riots or civil commotion, intervention of public authority, explosion or accident).
29. **WAIVER OF BREACH**

No failure by the Company to insist on strict performances of any of the terms in these Terms is a waiver of any right or remedy which the Company may have, and is not a waiver of any subsequent breach or default by the customer.
30. **NO ASSIGNMENT**

Neither the Agreement nor any rights arising under the Agreement may be assigned by the customer without the prior written consent of the Company which is at the Company's absolute discretion.
31. **SEVERABILITY**

If any provision contained in these Terms is held by a court to be unlawful, invalid or unenforceable, the validity and enforceability of the remaining provisions are not affected.

# SURTECO



## **NEW SOUTH WALES**

Head Office

7-11 Penelope Crescent, Arndell Park  
PO Box 661, Blacktown  
Sydney, NSW 2148 Australia  
Phone (Customer Service): +61 (0) 2 9421 0366  
Phone (Head Office): +61 (0) 2 9421 0300  
Fax: +61 (0) 2 8814 8000

## **VICTORIA**

37-39 Pacific Drive  
Keysborough VIC 3173, Australia  
Phone: +61 (0) 3 9798 6282  
Fax: +61 (0) 3 9798 5929

## **QUEENSLAND**

13 Tombo Street  
Capalaba QLD 4157 Australia  
Phone: +61 (0) 7 3245 1881  
Fax: +61 (0) 7 3245 1476

## **WESTERN AUSTRALIA**

4 Lee Place  
Perth Domestic Airport WA 6105 Australia  
Phone: 1300 SURTECO  
Fax: +61 (0) 2 8814 8000

[www.surteco.com.au](http://www.surteco.com.au)

[info@surteco.com.au](mailto:info@surteco.com.au)

